



# POSTAL BULLETIN

INFORMATION FOR ALL POSTAL EMPLOYEES



LXXVI

Washington 25, D. C., Tuesday, April 26, 1955—Five Page

19837

## New 3-Cent Stamp, Armed Forces Reserve

The Department will issue a 3-cent stamp in honor of the Armed Forces Reserve, through the Washington, D. C., post office, on Armed Forces Day, May 21, 1955.



The stamp will be 0.84 by 1.44 inches in dimension, arranged horizontally in a double outline frame, printed by the rotary process, electric-eye perforated and issued in sheets of 50. The color of the stamp will be purple. The printing of 110,000,000 3-cent Armed Forces Reserve stamps has been authorized.

The overall design of the stamp portrays five male enlisted personnel, attired in the uniform of the branch of service each represents: namely, reading left to right, Marines, Coast Guard, Army, Navy, and Air Force. An eagle and shield form a backdrop for the figures. The wording *Armed Forces Reserve* in dark gothic, is shown across the top of the stamp, and across the bottom *3¢ United States Postage 3¢* in white-face gothic.

Stamp collectors desiring first-day cancellations of the stamp may send a reasonable number of addressed envelopes to the Postmaster Washington, D. C., with money order remittance to cover the cost of the stamps to be affixed. Postage stamps and personal checks will not be accepted in payment. In view of the fact that many cities will observe Armed Forces Day, the postmaster at Washington, D. C., is being authorized to accept for servicing first-day covers which are mailed to him on or before May 21, 1955.

Envelopes submitted should be of ordinary letter size and each must be properly addressed. An enclosure of

(Continued on p. 2)

310201°—55

## GAO Credential Card Reported Lost

The General Accounting Office reports the loss of the following General Accounting Office credential card in the Detroit area:

Name, Cornelius W. McClafferty; number, DA-510; expiration date, good until revoked.

The lost card should not be honored and if presented should be taken up and forwarded to the General Accounting Office.

## Number All Insured Parcels to Canada

Reports indicate that many parcels, including those originating at APO's and FPO's are erroneously accepted for insurance to Canada under the arrangement whereby domestic parcels may be insured for \$10 or less without a serial number.

All insured parcels addressed for delivery in Canada must be numbered when the insurance receipt, *Form 3813-A or 3813-P*, is issued to the sender, and it is requested that special care be exercised to assure strict compliance.

## Correct Address Mail Equipment Shops

POSTAL BULLETIN 19834, April 14, 1955, incorrectly gave the address of the Mail Equipment Shops as Fifth and W Streets NW., Washington, D. C. The correct address is Mail Equipment Shops, Fifth and W Streets NE., Washington 25, D. C.

## Counterfeit Currency

The United States Secret Service, Treasury Department, has announced the discovery of the following new counterfeits:

A \$20 note bears the insignia of the Federal Reserve Bank of San Francisco, Calif., check letter and faceplate No. C 18, backplate No. 673, series of 1950. This note is printed on one sheet of paper from inferior plates. No attempt made to simulate the red and blue fibers. Portrait and background very dark. The serial number, \*01137932A, is the most outstanding defect on the specimen on hand inasmuch as Federal Reserve Star Notes have the star as a suffix and not a prefix. Lathe work on the face of the note along the bottom border is almost solid black. This note should not deceive handlers of currency.

A \$20 note bears the insignia of the Federal Reserve Bank of San Francisco, Calif., check letter and faceplate No. A 125, backplate No. 829, series of 1950A. This note is printed on one sheet of good grade bond paper that has plenty of body and snap. The entire note has a mottled effect due to numerous spots where the ink did not adhere to the paper. The serial number, F85816445H, is the most outstanding defect on the specimen on hand as it does not have the proper prefix letter for the San Francisco Federal Reserve District. The sky above the White House on the back of the note is exceedingly poor. This note should not deceive persons familiar with United States currency.

A \$20 note on the Federal Reserve Bank of New York, N. Y., check letter and faceplate No. F 150, backplate No. 873, series of 1950A. This note is printed on one sheet 25 percent rag content bond paper that is about 1/1000 of an inch thinner than genuine paper. No attempt was made to simulate the distinctive

(Continued on p. 2)

19837, April 26, 1955, Page 1

**Counterfeit Currency**

*(Continued from p. 1)*

fibers. Portrait blends into the background and does not have any highlights. Face printed in dull black and back is printed in a dull light green. Serial numbers appear on some specimens to have been applied with a rubber stamp. This should not deceive handlers of currency.

A \$10 note on the Federal Reserve Bank of Chicago, Ill., check letter and faceplate No. H 93, backplate No. 1493, series of 1950. This note is an inferior reproduction printed on one piece of good grade bond paper. No attempt was made to imitate the red and blue fibers. The portrait of Hamilton is very dark. Noticeable dark spot under his left eye. Wording on Treasury seal is obliterated with green ink. Fine black lines run vertically through the note near the area of the Federal Reserve Bank seal and the right hand border. Back is very faint, has a washed-out appearance. This note should not deceive persons familiar with United States currency.

A \$10 note on the Federal Reserve Bank of Chicago, Ill., check letter and faceplate No. I 239, backplate No. 1474, series of 1950A. This is a deceptive reproduction printed on distinctive genuine paper. The serial number has the prefix letter A instead of the correct prefix letter G. The portrait is printed dark with coarse detail lines. The Treasury seal and serial numbers appear to contain metallic particles in the ink that glisten when viewed with oblique lighting. Only the center portion of the steps for the Treasury Building on the back of the note is reproduced.

A \$10 note on the Federal Reserve Bank of Saint Louis, Mo., check letter and faceplate No. E 47, backplate No. 1474, series of 1950. This is a deceptive note printed on genuine paper. The most noticeable defect is the improper prefix letter A for the Federal Reserve District of Saint Louis in the serial No. A36650145H. This note is associated with above-described note.

A \$10 note on the Federal Reserve Bank of Boston, Mass., check letter and faceplate No. Q 198, backplate No. 1474, series of 1950A. This is an extremely deceptive counterfeit note printed from intaglio plates on genuine paper. This note is asso-

ciated with the two above-described notes. However, in this instance the counterfeiter used the proper prefix A in his serial number, A28515780A, which serial number has appeared on all specimens received to date. The same back is used as on the associated notes and is inferior in comparison with the face.

A \$10 note on the Federal Reserve Bank of Kansas City, Mo., check letter and faceplate No. I 156, backplate No. 1265, series of 1950. This is a deceptive reproduction printed on one sheet of good grade paper. The most outstanding defect on the face of the note is the absence of highlights on Hamilton's forehead and the tip of his nose. The Treasury seal and serial numbers are printed in light green. This is a dangerous note and will be readily accepted unless examined carefully.

A \$10 note on the Federal Reserve Bank of New York, N. Y., check letter and faceplate No. I 156, backplate No. 1265, series of 1950. This note is of the same general description as the above-described note.

\$10 notes on the Federal Reserve Bank of Saint Louis, Mo., series of 1950.

<i>Check letter and faceplate</i>	<i>Backplate</i>
C 129-----	1648
C 129-----	6844
C 176-----	4286
C 176-----	2648
C 176-----	2586
C 217-----	1648

These notes are printed on one sheet of average grade paper. The most noticeable defects are the gray appearance of the portrait and the style of type used for printing the serial numbers.

A \$1 silver certificate, check letter and faceplate No. H5758, backplate No. 4362, series of 1935C. This note is printed on one sheet of average grade paper. No attempt was made to simulate the distinctive red and blue fibers. The face of the note is deceptive, but it is printed too light, and there is a white area on Washington's forehead that extends into his hair. The back of the note, which is upside down, is very inferior and is printed in a blue-green color. Detail is missing throughout on both designs of the Great Seal of the United States. When both sides of this note are examined it should be detected by persons familiar with handling United States currency.

**New 3-Cent Stamp  
Armed Forces Reserve**

*(Continued from p. 1)*

medium weight should be placed in each envelope and the flap either sealed or turned in. An outside envelope must not be sent for return of first-day covers. The envelope to the Postmaster, Washington, D. C., should be endorsed *First Day Covers*. Collectors should refrain from requesting hand cancellations since covers will be machine canceled so far as practicable. Orders for first-day covers must not include requests for uncanceled stamps.

For the benefit of collectors desiring stamps of selected quality for philatelic use, the 3-cent Armed Forces Reserve commemorative stamp will be available at the Philatelic Agency, Post Office Department, Washington, D. C., on and after May 21, 1955. To insure prompt shipment, mail orders to the Agency should include no other stamp issues. **The Philatelic Agency does not service first-day covers.**

Postmasters at first-class post offices requiring this commemorative issue in lots of 25,000 or more will requisition them from the Department in the usual manner. Those offices requiring less than 25,000 may obtain this stamp by submitting requisitions to their Regional Distributing Office.

Postmasters ordering stamps from Regional Distributing Offices should submit requisitions about May 21, 1955. Regional Distributing Office postmasters should submit requisitions to the Department promptly upon the receipt of this notice.

Postmasters will please post a copy of this notice on the bulletin board, give information to the press, and notify all local stamp clubs regarding the issuance of the 3-cent Armed Forces Reserve commemorative stamp.

**Postmasters are cautioned not to place the stamp herein announced on sale before May 22, 1955.**

**POST OFFICE STATIONS**

Established

**CALIFORNIA**

Monrovia: No. 4 (contract), Los Angeles County, effective May 1, 1955.

**MINNESOTA**

Hutchinson: Cedar Mills (rural), Meeker County, effective May 1, 1955.

**POST OFFICE CHANGES**

Discontinued—First Class

**PENNSYLVANIA**

41-77040. Shillington, Berks County. Effective May 31, 1955. Mail to Reading.

Discontinued—Second Class

**NEW YORK**

35-75950. Sea Breeze, Monroe County. Effective June 30, 1955. Mail to Rochester.

Discontinued—Third Class

**NEW JERSEY**

33-40050. Keswick Grove, Ocean County. Effective May 31, 1955. Mail to Whiting.

Discontinued—Fourth Class

**ALABAMA**

01-32500. Freemanville, Escambia County. Effective May 31, 1955. Mail to Atmore.

**ARKANSAS**

04-41490. Highland, Pike County. Effective May 31, 1955. Mail to Nashville.  
 04-69840. Pike, Pike County. Effective May 31, 1955. Mail to Delight.  
 04-75870. Rosboro, Pike County. Effective May 31, 1955. Mail to Glenwood.

**GEORGIA**

12-13090. Curryville, Gordon County. Effective May 31, 1955. Mail to Calhoun.  
 12-31790. Farrar, Jasper County. Effective May 31, 1955. Mail to Shady Dale.  
 12-47630. Kelly, Jasper County. Effective May 31, 1955. Mail to Shady Dale.

**INDIANA**

17-49170. Locust Point, Harrison County. Effective May 14, 1955. Mail to New Albany.

**KENTUCKY**

20-09440. Brewers, Marshall County. Effective May 14, 1955. Mail to Benton.  
 20-22600. Duckers, Woodford County. Effective as of Apr. 13, 1955. Mail to Midway.  
 20-28240. Flint Springs, Ohio County. Effective May 31, 1955. Mail to Balzertown.  
 20-64040. Randolph, Metcalfe County. Effective May 14, 1955. Mail to Edmonton.

**MICHIGAN**

25-85600. Selkirk, Ogemaw County. Effective May 31, 1955. Mail to West Branch.

**MINNESOTA**

26-33800. Fox Lake, Martin County. Effective May 31, 1955. Mail to Welcome.

**MISSISSIPPI**

27-04030. Barr, Tate County. Effective May 31, 1955. Mail to Senatobia.  
 27-43940. Looxahoma, Tate County. Effective May 31, 1955. Mail to Senatobia.  
 27-81640. Thyatira, Tate County. Effective May 31, 1955. Mail to Senatobia.  
 27-92300. Wyatte, Tate County. Effective May 31, 1955. Mail to Senatobia.

**MISSOURI**

28-38340. Hooker, Pulaski County. Effective May 31, 1955. Mail to Arlington.  
 28-48840. Lupus, Moniteau County. Effective Apr. 30, 1955. Mail to Jamestown.

**Organizations Designated by Attorney General Under E. O. 10450**

**(Security Requirements for Government Employment)**

Compiled from memorandum of Attorney General dated April 4, 1955

The following organizations are additions to the list published in the POSTAL BULLETIN 19822 of March 3, 1955, designated by the Attorney General under Executive Order 10450:

- Benjamin Davis Freedom Committee.
- Civil Liberties Sponsoring Committee of Pittsburgh.
- Comite Pro Derechos Civiles. (See Puerto Rican Comite Pro Libertades Civiles.)
- Committee to Abolish Discrimination in Maryland. (See Congress Against Discrimination; Maryland Congress Against Discrimination; Provisional Committee to Abolish Discrimination in the State of Maryland.)
- Committee to Defend the Rights and Freedom of Pittsburgh's Political Prisoners.
- Congress Against Discrimination. (See Committee to Abolish Discrimination in Maryland.)
- Congress of the Unemployed.
- East Bay Peace Committee.
- Guardian Club.
- Independent Party (Seattle, Wash.). (See Independent People's Party.)
- Independent People's Party. (See Independent Party.)
- Johnson-Forest Group. (See Johnsonites.)
- Johnsonites. (See Johnson-Forest Group.)
- League for Common Sense.
- Maryland Congress Against Discrimination. (See Committee to Abolish Discrimination in Maryland.)
- Michigan Council for Peace.
- National Committee to Win Amnesty for Smith Act Victims.
- Peoples Programs (Seattle, Wash.).
- People's Rights Party.
- Pittsburgh Arts Club.
- Provisional Committee on Latin American Affairs.
- Provisional Committee to Abolish Discrimination in the State of Maryland. (See Committee to Abolish Discrimination in Maryland.)
- Puerto Rican Comite Pro Libertades Civiles (CLC). (See Comite Pro Derechos Civiles.)
- Queensbridge Tenants League.
- Syracuse Women for Peace.
- Trade Union Committee for Peace. (See Trade Unionists for Peace.)
- Trade Unionists for Peace. (See Trade Union Committee for Peace.)
- United Defense Council of Southern California.

**MONTANA**

29-12960. Camps Pass, Powder River County. Effective May 31, 1955. Mail to Ashland.

**NORTH CAROLINA**

36-08480. Blue Ridge, Buncombe County. Effective Apr. 30, 1955. Mail to Black Mountain.

**NORTH DAKOTA**

37-87040. Tunbridge, Pierce County. Effective May 15, 1955. Mail to Rugby.

**OKLAHOMA**

39-61820. Olney, Coal County. Effective June 15, 1955. Mail to Coalgate.  
 39-71610. Saddle Mountain, Kiowa County. Effective May 31, 1955. Mail to Mountain View.

**TENNESSEE**

47-40200. Henryville, Lawrence County. Effective Apr. 30, 1955. Mail to Summertown.

**VIRGINIA**

51-06780. Bells Cross Roads, Louisa County. Effective Apr. 30, 1955. Mail to Louisa.

**VIRGINIA—Continued**

51-25260. Detrick, Shenandoah County. Effective June 30, 1955. Mail to Seven Fountains.

**WASHINGTON**

54-75880. Seabold, Kitsap County. Effective Apr. 30, 1955. Mail to Winslow.

Modified—Discontinued—Second Class

**PENNSYLVANIA**

41-02000. Andalusia, Bucks County. The order discontinuing this office, effective Apr. 30, 1955, is hereby modified to show the effective date as May 31, 1955.

Rescinded—Discontinued—Fourth Class

**ILLINOIS**

16-21900. Dover, Bureau County. The order discontinuing this office effective Apr. 15, 1955, is rescinded.

**LOUISIANA**

21-03120. Arbroth, West Baton Rouge Parish. The order discontinuing this office effective Apr. 30, 1955, is hereby rescinded.

(Continued on p. 4)

**Notices:**

**Stolen Money-Order Forms, Since Jan. 1, 1955** (See Postal Manual XVI-16)

1-89,657,930 to 1-89,658,000	Seekonk, Sta. 1, Mass., Mar. 21, 1955.
2-42,012,042 to 2-42,012,043	Staten Island, Sta. 4, N. Y., Apr. 11, 1955.
2-42,012,054 to 2-42,012,055	
2-42,012,103 to 2-42,012,106	
3-41,623,298 to 3-41,623,398	
4-25,037,241 to 4-25,038,000	Allentown, Sta. 7, Pa., Mar. 25, 1955.
5-23,957,951 to 5-23,958,000	Hamilton, Sta. 4, Ohio, Feb. 5, 1955.
	Baltimore, Halethorpe Br., Md., Jan. 5, 1955.
5-30,944,601 to 5-30,944,710	Ghent, W. Va., Feb. 26, 1955.
5-39,235,388 to 5-39,235,400	Marvin, Va., Mar. 19, 1955.
6-24,233,751 to 6-24,234,000	Miami, Sta. 8, Fla., Jan. 8, 1955.
6-25,128,087 to 6-25,130,000	Albany, Sta. 1, Ga., Jan. 6, 1955.
6-33,106,388 to 6-33,106,400	Baird, Miss., Apr. 12, 1955.
6-34,754,707 to 6-34,754,800	Nunnally, Tenn., Apr. 11, 1955.
6-36,920,001 to 6-36,921,500	Miami, Sta. 8, Fla., Jan. 8, 1955.
6-98,323,387 to 6-98,323,394	Ponce, Cantera Sta., P. R., Feb. 19, 1955.
7-24,651,649 to 7-24,652,000	Peoria, Norwood Park Rural Sta., Ill., Feb. 12, 1955.
7-26,555,761 to 7-26,555,765	Chicago, Sta. 29, Ill., Jan. 23, 1955.
7-29,372,834 to 7-29,372,850	Olmsted, Ill., Feb. 22, 1955.
7-36,598,685 to 7-36,599,500	Chicago, Sta. 29, Ill., Jan. 23, 1955.
7-42,239,535 to 7-42,239,600	Kellerville, Ill., Mar. 7, 1955.
7-54,651,711 to 7-54,651,800	Chicago, Sta. 56, Ill., Mar. 19, 1955.
8-56,960,902 to 8-56,960,950	Conroy, Iowa, Jan. 5, 1955.
8-60,427,951 to 8-60,428,000	Wyman, Iowa, Feb. 1, 1955.
9-36,819,882 to 9-36,820,000	Saint Paul, Sta. 31, Minn., Jan. 4, 1955.
9-39,438,159 to 9-39,438,200	Wayzata, Navarre Rural Sta., Minn., Jan. 18, 1955.
10-68,969,508 to 10-68,969,600	Cloud Chief, Okla., Feb. 23, 1955.
10-72,558,035 to 10-72,558,500	Omaha, Sta. 8, Nebr., Mar. 14, 1955.
10-72,572,433 to 10-72,572,500	OMAHA, STA. 19, NEBR., APR. 19, 1955.
10-74,161,930 to 10-74,162,000	Kansas City, Sta. 3, Mo., Mar. 25, 1955.
10-79,614,701 to 10-79,615,200	OMAHA, STA. 19, NEBR., APR. 19, 1955.
11-86,777,190 to 11-86,777,200	San Antonio, Sta. 14, Tex., Jan. 21, 1955.
12-2,021,912 to 12-2,022,000	Cortaro, Ariz., Mar. 24, 1955.
12-9,169,278 to 12-9,170,000	Phoenix, Sta. 15, Ariz., Apr. 17, 1955.
12-13,722,251 to 12-13,722,600	Prescott, Wash., Feb. 25, 1955.
12-16,520,701 to 12-16,521,000	Cortaro, Ariz., Mar. 24, 1955.
12-61,027,709 to 12-61,027,712	San Francisco, APO 102, Calif., Apr. 6, 1955.
12-62,999,001 to 12-62,999,300	Seattle, APO 731, Br. Wash., Jan. 19, 1955.
12-88,539,288 to 12-88,539,350	Prescott, Wash., Feb. 25, 1955.

**Domestic Unlawful Orders:**

<i>State &amp; city</i>	<i>Name covered by order</i>
California, Hollywood	Glamour Models.

**Domestic Fraud Orders:**

<i>State &amp; city</i>	<i>Name covered by order</i>
Florida, Miami	Horizons; Florida Job Guide; R. V. Sias.
Texas, El Paso	M & E Laboratories.

**Foreign Fraud Orders:**

<i>Country &amp; city</i>	<i>Name &amp; address covered by order</i>
Canada, Toronto, Ontario	Endicott, James G.; Endicott, James G., Editor; Endicott, Mary A., Assistant Editor; Canadian Far Eastern Newsletter, The; 134 Glenholme Avenue.

**POST OFFICE CHANGES**

(Continued from p. 3)

**Rescinded—Discontinued—Fourth Class**  
21-91000. Walls, West Baton Rouge Parish. The order discontinuing this office effective Apr. 30, 1955, is hereby rescinded.

**Change of Name—Third Class**

**CALIFORNIA**

05-04320. Avila, San Luis Obispo County. Changed to Avila Beach, with same post office number. Effective June 1, 1955.

**Change of Name—Fourth Class**

**ALABAMA**

01-29400. Falco, Covington County. Change to Wing, with Post Office No. 01-88380. Effective June 1, 1955.

**Summer Post Offices—Opened**

**ARIZONA**

03-55130. Mount Lemmon, Pima County. Effective Apr. 15, 1955.

**CALIFORNIA**

05-10680. Butte Meadows, Butte County. Effective May 1, 1955.

05-14780. Chambers Lodge, Placer County. Effective May 15, 1955.

05-49440. Mill Creek, Tehama County. Effective May 1, 1955.

**MAINE**

22-70050. Prouts Neck, Cumberland County. Effective May 15, 1955.

22-17550. Cousins Island, Cumberland County. Effective May 2, 1955.

22-49350. Maranacook, Kennebec County. Effective May 16, 1955.

**MASSACHUSETTS**

24-01700. Antassawamock Neck, Plymouth County. Effective May 1, 1955.

**MICHIGAN**

25-71700. Otsego Lake, Otsego County. Effective May 15, 1955.

**NEW YORK**

35-48400. Loon Lake, Franklin County. Effective May 15, 1955.

**PENNSYLVANIA**

41-16000. Conneaut Lake Park, Crawford County. Effective May 16, 1955.

**Winter Post Office—Closed**

**ALASKA**

02-61930. Nightmute, Fourth Judicial Division. Effective Apr. 30, 1955. Mail to Tununak.

**POST OFFICES BRANCHES**

**Established**

**NORTH CAROLINA**

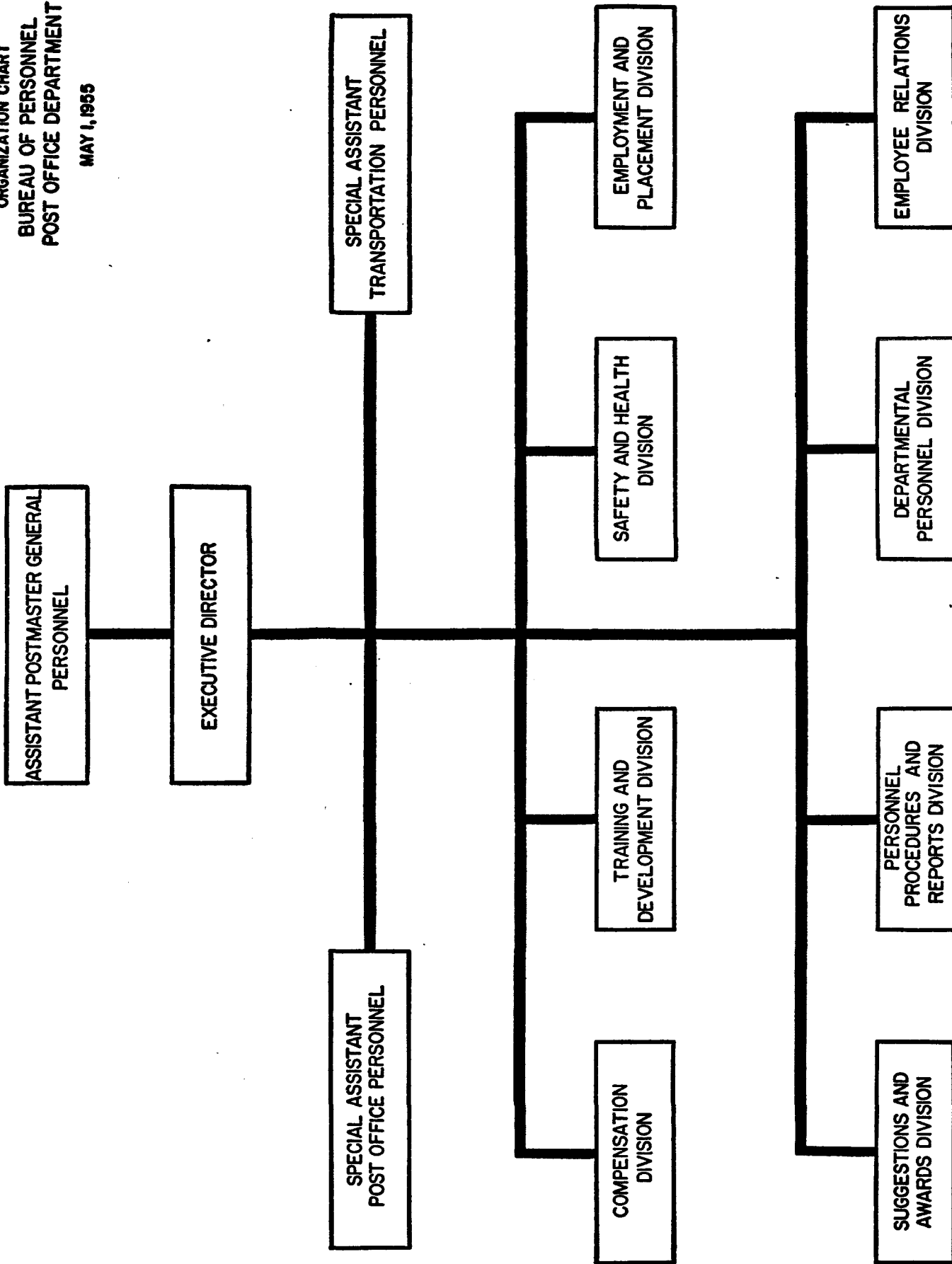
Black Mountain: Blue Ridge (rural), Buncombe County, effective May 16, 1955.

**Correction**

**CALIFORNIA**

Santa Ana: The order appearing in the POSTAL BULLETIN of Apr. 19, 1955, listing Money Order Unit No. 2 as an establishment effective Mar. 15, 1955, is corrected to show Money Order Unit No. 2 discontinued.

ORGANIZATION CHART  
BUREAU OF PERSONNEL  
POST OFFICE DEPARTMENT  
MAY 1, 1955



Supersedes chart in Postal Bulletin 19810, dated January 18, 1955