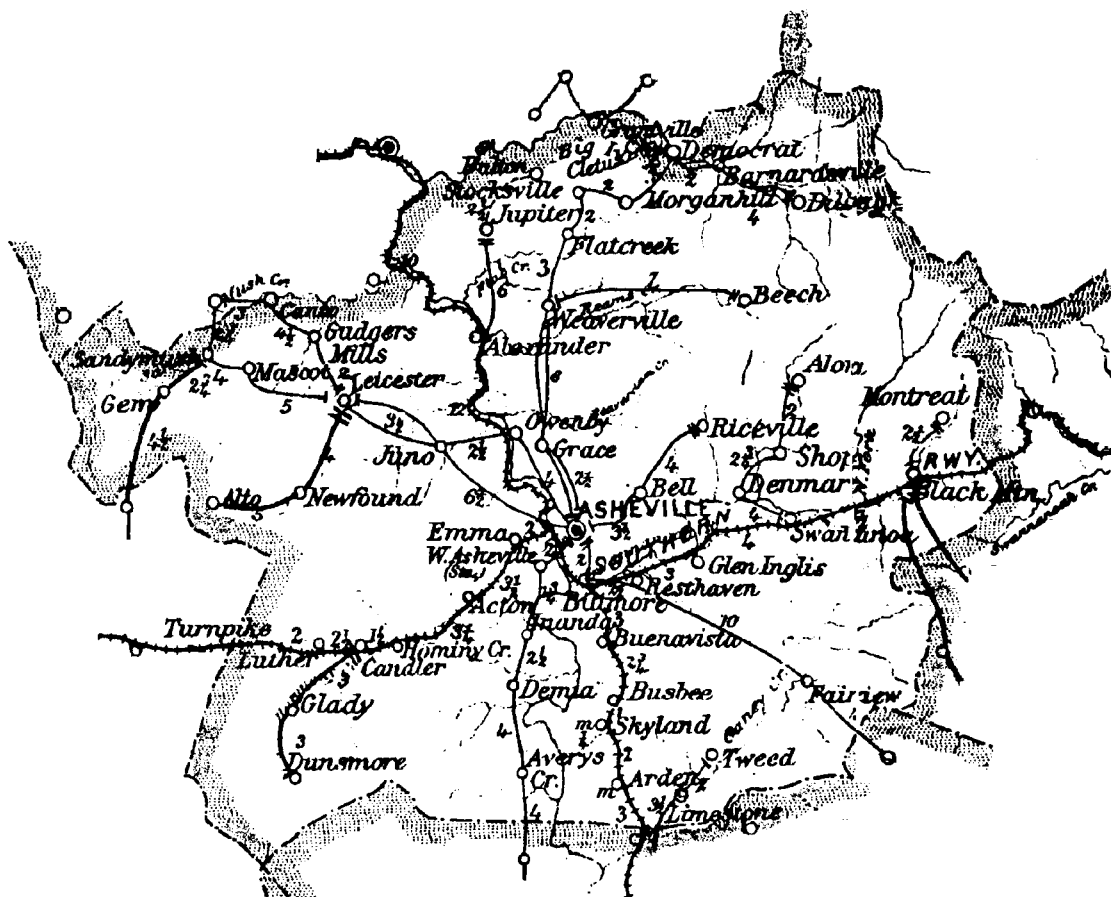


# BUNCOMBE COUNTY

Formed in 1791 from Burke and Rutherford

Number of Post Offices - 150  
Number with postmarks known - 91

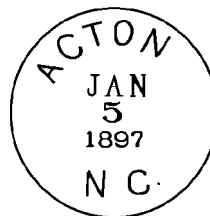


## BUNCOMBE COUNTY

### Acton, name changed from Harkins

(Buncombe)

Joseph M. Hawkins	19 Dec 1887
Ora M. Case	21 Dec 1897
Ora M. King	31 Jul 1902
Alberter W. Fullcom	30 Sep 1902
Mary E. Jones	3 Sep 1904
Edward H. Norburn	8 Mar 1912
Susan L. Norburn	26 Aug 1914
Frank D. Rogers	15 Mar 1918
Maude G. Rogers	10 Jun 1919
Discontinued	16 Jan 1920
Mail to Candler	



Type 1  
27.5 mm Black  
6 Sep 1888  
7 Jul 1903

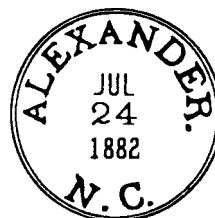


Type 2  
31 mm Black  
Doane Type 3-3  
20 Jun 1906  
13 Jul 1908

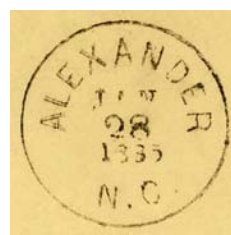
### Alexander, name changed from French Broad

(Buncombe)

Marcus W. Robertson	13 Sep 1881
Pinkney A. Chambers	28 Sep 1881
Solomon H. Liles	6 Nov 1882
Hattie E. Johnson	12 Dec 1887
David J. Hunsucker	6 Aug 1889
Zebulon F. Vance	19 Jul 1893
Richard S. Morris	3 Nov 1896
Hiram D. Buckner	14 Apr 1897
Alfred M. West	5 Nov 1901
John B. Hunter	7 Aug 1905
William R. Tillery	17 Jan 1911
Garrett H. Blankenship	8 Apr 1914
James N. Vance, Acting	1 Jul 1918
James N. Vance	6 Nov 1918
W. W. Parkere, Acting	19 Apr 1926
Carl W. Hunter	23 Aug 1926
Fred E. Sludere, Acting	2 Apr 1947
Fred E. Sluder	1 Jul 1947
Wren H. Freemane, Acting	15 Jun 1956
Wren H. Freeman	16 Aug 1958
Malee M. Keller Officer-In-Charge	2 Jun 1979
Dale R. Edmonds	26 Jan 1980
Glenn D. Meadows Officer-In-Charge	22 Jan 1982
Headlee L. Howard	1 May 1982
Darlene R. Cody Officer-In-Charge	28 Jun 1986
William A. Braisted	27 Sep 1986
Brenda K. Case Officer-In-Charge	21 Aug 1992
Bryan I. Roberts Officer-In-Charge	10 Sep 1992
Nina M. Sams Officer-In-Charge	2 Mar 1993
Rosemary K. Allen Officer-In-Charge	30 Apr 1993
David A. Snow	12 Jun 1993



Type 1  
28 mm Black  
24 Jul 1882



Type 2  
27 mm Black  
28 Jan 1885



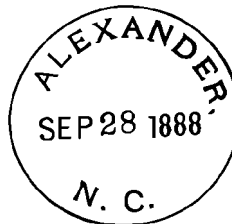
Type 3  
30 mm Black  
29 Sep 1885  
28 Oct 1887

# BUNCOMBE COUNTY

## Alexander (Cont.)

(Buncombe)

Bryan I. Roberts	31 Jan 1998
Sharon R. Coffey Officer-In-Charge	13 Sep 1999
LaVada M. Kemp	23 Oct 1999
Theresa Stapleton Officer-In-Charge	26 Mar 2010
John C. Parker II	1 Jun 2013



Type 4  
30.5 mm Blue  
(without star killer)  
28 Sep 1888



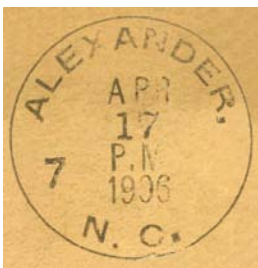
Type 5  
28.5 mm Black  
27 Mar 1895



Type 6  
27.5 mm Black  
9 Jun 1898



Type 7  
28 mm Black  
15 Mar 1900  
6 May 1902



Type 8 var  
"7" lower left  
17 Apr 1906



Type 8  
31.5 mm Black  
Doane Type 3-3  
19 Jan 1906  
8 Aug 1907

# BUNCOMBE COUNTY

Alexander (Cont.)

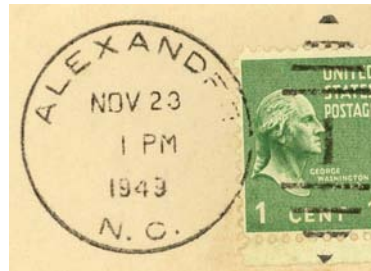
(Buncombe)



Type 9  
31 mm Black  
1906 Type A/1 4-Bar  
10 May 1912



Type 10  
33 mm Black  
1936 Type F/1 4-Bat  
20 Jun 1944  
7 May 1945



Type 11  
30.5 mm Black  
Metal Duplex Type ?  
23 Nov 1949  
7 Dec 1951



Type 12  
31.5 mm Magenta  
24 Sep 1958



Type 13  
30.5 mm Black  
Metal Duplex Type ?  
28 Jun 1960  
2 Mar 1965

BUNCOMBE COUNTY

Alexander (Cont.)

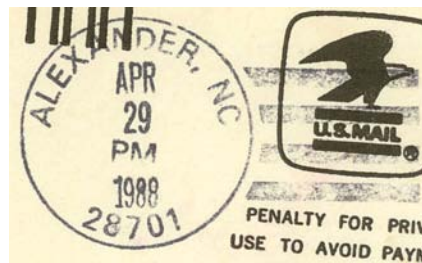
(Buncombe)



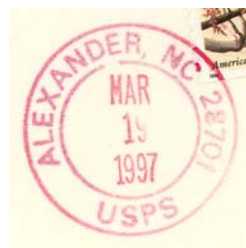
Type 14  
32.5 mm Black  
1963 Type F/2 4-Bar (28701)  
19 Apr 1967  
29 Nov 1978



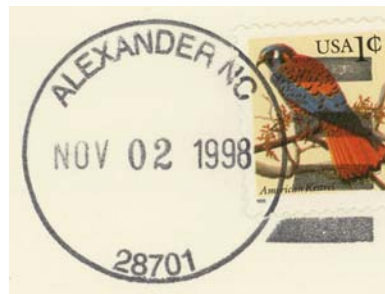
Type 15  
33.5 mm Black  
1963 Type F/2 4-Bar (28701)  
24 Jun 1982



Type 16  
30 mm Black  
Self-Inking Postmarker  
Type 2B (28701)  
4 Nov 1985  
8 Dec 1992



Type 17  
28 mm Red  
Self-Inking Postmarker (28701)  
19 Mar 1997



Type 18  
34.5 mm Black  
Self-Inking Postmarker (28701)  
19 Mar 1997  
2 Nov 1998

BUNCOMBE COUNTY

Alexander (Cont.)

(Buncombe)



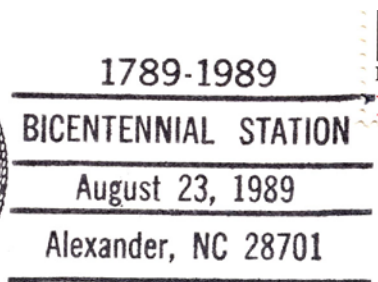
Type 19  
34 mm Red  
Self-Inking Postmarker  
(28701-9998)  
2 Nov 1998



Type 20  
33.5 mm Red  
Self-Inking Postmarker  
(28701-9998)  
21 Aug 2006

Temporary Station Cancels

Bicentennial Station



Type 1  
86 x 37 mm Black  
(28701)  
23 Aug 1989

Alice

(Buncombe)

Charles P. West	26 Jun 1886
Mary E. Roberson	20 Feb 1889
James F. Gillespie	30 Jan 1891
Discontinued	14 Dec 1892
Papers to Proviso	

## BUNCOMBE COUNTY

### Allensville

(Buncombe)

James Allen	16 Mar 1829
Discontinued	10 May 1833

### Alora, name changed from Pinnacle

(Buncombe)

Noah H. Melton	2 Apr 1900
Joseph F. Bartlett	18 Jun 1902
Thomas W. Stevens	23 Jan 1904
Star Bartlett	1 Oct 1904
Robert V. Gragg	21 Jun 1906
Discontinued	30 Nov 1906
Mail to Farm School	

### Alto

(Buncombe)

Doctor B. Ford	6 Oct 1882
William P. Robinson	29 Dec 1900
Discontinued	30 Jan 1915
Mail to Leicester	



Type 1  
27 mm Black  
5 Dec 1903  
30 Oct 1906



Type 2  
31.5 mm Black  
1906 Type A/1 4-Bar  
28 Dec 1908

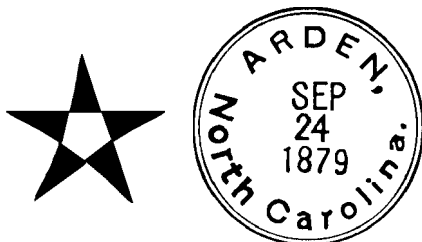
# BUNCOMBE COUNTY

## Arden

(Buncombe)

James W. Patton	6 Feb 1878
Charles W. Beale	24 Feb 1879
Thomas L. Rickman	20 Feb 1880
David H. Webb	17 Mar 1884
Joseph H. Lytle	9 Jul 1884
Mitchell A. Rickman	2 May 1889
Marcus L. Shuford	15 May 1893
Marion J. Rick	30 Sep 1893
Charles F. Sumner	7 Aug 1897
Mitchell A. Rickman	25 May 1900
Joseph R. Reagan	14 Oct 1909
Benjamin L. Shuford	1 Jun 1915
Marcus J. Garren	30 Jun 1916
George W. Wells	2 Jul 1919
Mitchell A. Rickman, Acting	22 Dec 1921
Mitchell A. Rickman	7 Nov 1922
Ida Josephine Hughes, Acting	24 Dec 1931
Wallace C. Frost	15 Apr 1932
Paul E. Rickman, Acting	30 Jun 1936
Paul E. Rickman	23 Jul 1937
Marcus J. Garren, Jr., Acting	31 Mar 1942
Elsie F. Shuford	13 Nov 1942
Donald H. Elingburg, Acting	3 May 1963
Donald H. Elingburg	5 Aug 1964
Richard D. Willis Officer-In-Charge	3 Jun 1988
Lamar E. McGinnis	10 Sep 1988
John F. Braniecki Officer-In-Charge	24 Aug 2007
Clara Deaver Officer-In-Charge	17 Mar 2008
Meryl R. Burke	29 Aug 2009

Manuscript  
21 Sep 1879



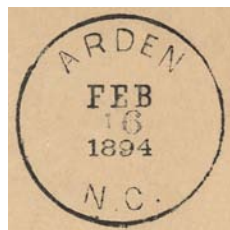
Type 1  
30.5 mm Magenta  
14 May 1879  
24 Sep 1879  
  
30.5 mm Black  
26 Aug 1880



Type 2  
28 mm Black  
28 Nov 1889



Type 3  
27 mm Black  
31 Jul 1888  
13 Aug 1890



Type 4  
27 mm Black  
28 Nov 1893  
16 Feb 1894



Type 5  
29.5 mm Black  
Metal Duplex Type H2 (6 bar)  
24 Jul 1901  
20 Jan 1906

# BUNCOMBE COUNTY

Arden (Cont.)

(Buncombe)



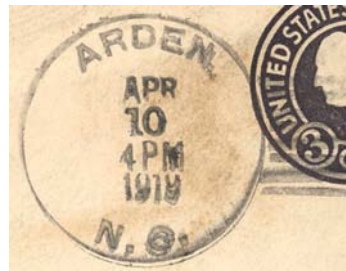
Type 6  
31 mm Black  
1906 Type A/1 4-Bar  
3 Jun 1907  
29 Aug 1907



Type 7  
31.5 mm Black  
1908 Type A/2 4-Bar  
16 Jun 1911



Type 8  
31 mm Black  
1910 Type B 4-Bar  
11 Jul 1913  
20 Dec 1916



Type 9  
32 mm Black  
1910 Type B 4-Bar  
10 Apr 1919

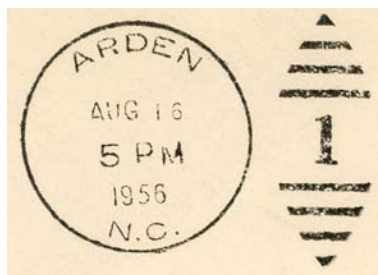


Type 10  
26 mm Black  
Metal Duplex Type E2  
22 Jun 1937  
5 Sep 1949

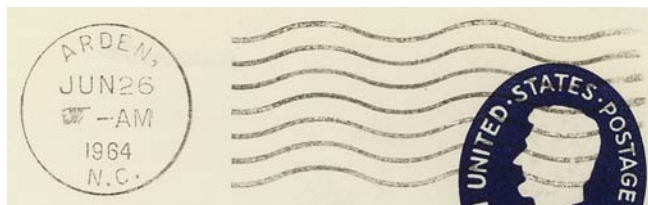
# BUNCOMBE COUNTY

Arden (Cont.)

(Buncombe)



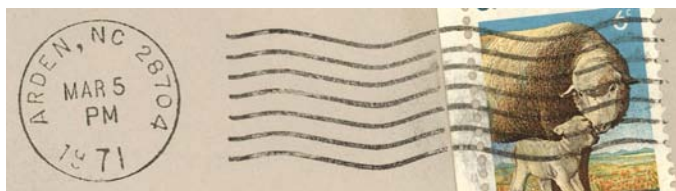
Type 11  
30 mm Black  
Metal Duplex Type ?  
16 Aug 1956  
20 Mar 1965



Type 12  
22 mm Black  
International Machine  
Type AT/S 2721  
2 Nov 1956  
29 Sep 1965



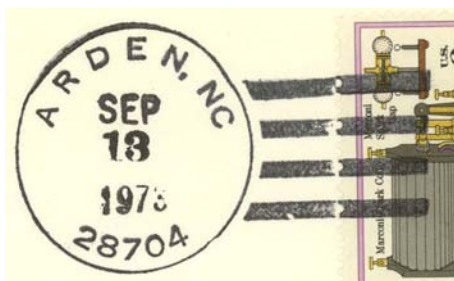
Type 13  
23.5 mm Black  
International Machine  
Type ATS/z 2721 (28704)  
22 Dec 1965  
23 Feb 1977



Type 14  
21.5 mm Black  
International Machine  
Type Nz30 (28704)  
10 Jan 1968  
1 Nov 1976



Type 15  
32.5 mm Black  
1963 Type F/2 4-Bar (28704)  
16 Nov 1970  
24 Jun 1982

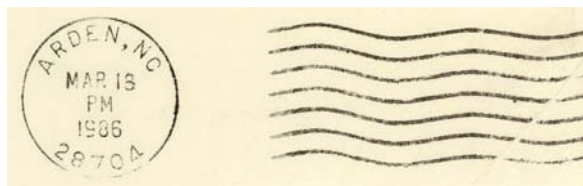


Type 16  
31 mm Black  
1963 Type F/2 4-Bar (28704)  
13 Sep 1973  
15 May 1974

BUNCOMBE COUNTY

Arden (Cont.)

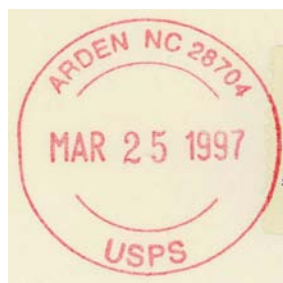
(Buncombe)



Type 17  
20.5 mm Black  
International Machine  
Type Hz 30 (28704)  
18 Mar 1986



Type 18  
30 mm Red  
Self-Inking Postmarker (28704)  
21 Mar 1994



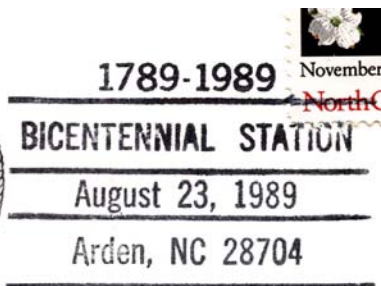
Type 19  
34 mm Red  
Self-Inking Postmarker (28704)  
25 Mar 1997



Type 20  
35.5 mm Red  
Self-Inking Postmarker (28704)  
22 Oct 2005

Temporary Station Cancels

Bicentennial Station



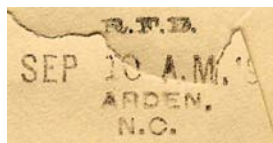
Type 1  
86 x 37 mm Black  
(28704)  
23 Aug 1989

## BUNCOMBE COUNTY

### Arden (Cont.)

(Buncombe)

Rural Free Delivery



Type 2B Black  
10 Sep 1902

### Avery's Creek

(Buncombe)

Philip J. Israel	9 Feb 1848
P. Jasper Israel, CSA	Bibliog. #19
CSA office closed on or before	30 Apr 1865
Thomas H. Burnett	13 Feb 1866
Erastus R. Israel	4 Apr 1866
Richard Ledbetter	10 Jul 1867
Floyd B. Johnson	26 Feb 1903
Joel Ingram	25 Nov 1905
Discontinued	29 Jun 1907
Mail to Arden	

*Averys Creek Nc*

Manuscript  
18 Nov 1848  
23 Feb 1893

### Azalea, name changed from Glen Inglis

(Buncombe)

Samuel T. Lewis	29 Nov 1909
Joseph T. Lewis, Acting	1 Jan 1947
Franklin R. Lewis, Acting	1 Feb 1948
Franklin R. Lewis	11 Mar 1948
Discontinued	31 Mar 1957



Type 1  
31.5 mm Black  
1908 Type A/2 4-Bar  
20 May 1910  
19 Sep 1910



Type 2  
31 mm Black  
1910 Type B 4-Bar  
9 Sep 1914

BUNCOMBE COUNTY

Azalea (Cont.)

(Buncombe)



Type 3  
34 mm Black  
1924 Type D 4-Bar  
11 May 1932



Type 4  
34 mm Black  
1931 Type C/2 4-Bar  
21 Jul 1935  
22 Dec 1941



Type 5  
33 mm Black  
1936 Type F/1 4-Bar  
20 Jul 1948  
9 Nov 1948



Type 6  
33 mm Black  
1936 Type F/1 4-Bar  
15 Mar 1952



Type 7  
32 mm Black  
1936 Type F/1 4-Bar  
31 May 1951  
31 Mar 1957

## BUNCOMBE COUNTY

### Azalea (Cont.)

(Buncombe)



Type 8  
30 mm Magenta  
31 Mar 1957

### Bald Plateau, from McDowell County

(Buncombe)

James A. Taylor                      1925  
Sallie Hall                              25 Feb 1927  
Discontinued                        31 Oct 1934  
Mail to Bat Cave, Henderson County

### Baldrige's

(Buncombe)

Robert Murray                      28 May 1828  
Discontinued                        10 May 1833

### Barnard's Station

(Buncombe)

Alfred Hunter                        16 Mar 1829  
Discontinued                        10 May 1833

# BUNCOMBE COUNTY

## Barnardsville

(Buncombe)

Frank P. Roberts	26 Feb 1875
Hezekiah E. Barnard	17 Jan 1876
Joseph L. Ray	20 Jun 1881
James H. Roberts	12 Dec 1881
Albert G. Anderson	27 Nov 1882
James M. Whittemore	25 Jun 1884
William R. Maney	26 Apr 1890
James M. Whittemore	29 May 1890
William R. Maney	24 Mar 1893
James M. Greenwood	13 Jan 1897
Reuben P. Whitt	3 Nov 1897
John M. Burlison	18 May 1898
John W. Carson	22 Dec 1903
Matt Burlison	27 Jan 1909
William L. Dillingham	20 Feb 1913
Flem L. Whitaker, Acting	21 Aug 1924
Flem L. Whitaker	19 Nov 1924
Samuel R. Whitaker, Acting	17 Jan 1928
Stella M. Ledford	30 Nov 1928
Bettie Dillingham, Acting	2 Apr 1934
Sallie M. Brigmon	3 Mar 1936
Margaret L. Dillingham, Acting	31 Mar 1952
Judson C. Burrell	8 Apr 1957
Mrs. Mary Alice Maney	19 Feb 1972
Robert E. Deitz	10 Oct 1987
MyraJean Brigmon Officer-In-Charge	16 Feb 2005
Lynn C. Fox Officer-In-Charge	1 Mar 2005
Lynn C. Fox	9 Jul 2005
Alan B. Hensley	6 Oct 2012



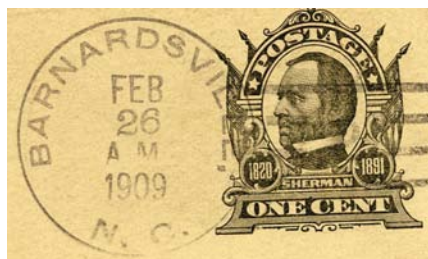
Type 1  
27 mm Black  
8 Mar 1896



Type 2  
28 mm Black  
10 Aug 1897



Type 3  
27.5 mm Black  
22 Jul 1904



Type 4  
31 mm Black  
Doane Type 3-2  
26 Feb 1909  
Feb 1912



Type 5  
31.5 mm Black  
1908 Type A/2 4-Bar  
20 Jan 1913

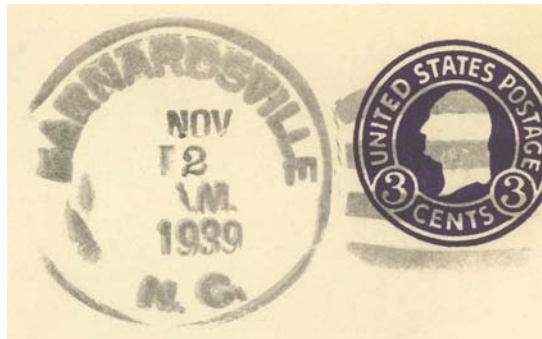
# BUNCOMBE COUNTY

Barnardsville (Cont.)

(Buncombe)



Type 6  
34 mm Black  
1920 Type C/1 4-Bar  
8 Dec 1924



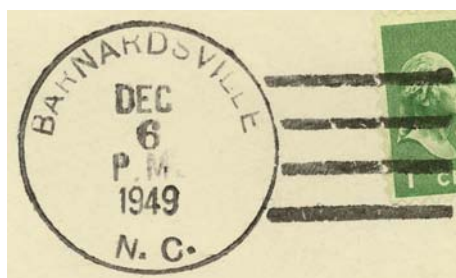
Type 7  
43 mm Black  
1939 Non-Standard 4-Bar  
10 Mar 1937  
2 Nov 1939



Type 8  
34 mm Black  
1936 Type F/1 4-Bar  
22 Jan 1942  
5 Apr 1951



Type 9  
31 mm Black  
1936 Type F/1 4-Bar  
19 Feb 194x

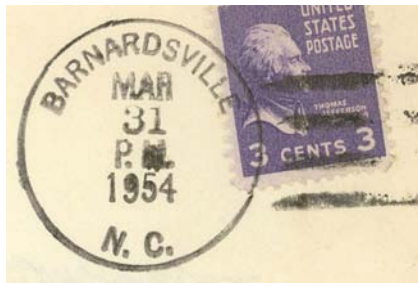


Type 10  
34 mm Black  
1936 Type F/1 4-Bar  
8 Oct 1949  
5 Apr 1951

# BUNCOMBE COUNTY

Barnardsville (Cont.)

(Buncombe)



Type 11  
32 mm Black  
1936 Type F/1 4-Bar  
31 Mar 1954



Type 12  
34 mm Black  
1936 Type F/1 4-Bar  
17 Mar 1956  
3 Jun 1963



Type 13  
33 mm Black  
1963 Type F/2 4-Bar (28709)  
29 Nov 1966  
5 Jan 1967



Type 14  
32 mm Black  
1963 Type F/2 4-Bar (28709)  
25 Apr 1969  
7 Dec 1970



Type 15  
33.5 mm Black  
1963 Type F/2 4-Bar (28709)  
29 Feb 1972  
3 Jan 1975

BUNCOMBE COUNTY

Barnardsville (Cont.)

(Buncombe)



Type 16  
33 mm Black  
1963 Type F/2 4-Bar (28709)  
22 Jul 1987



Type 17  
34 mm Black  
Self-Inking Postmarker  
Type 2A (28709)  
25 Mar 1997  
4 Mar 1998

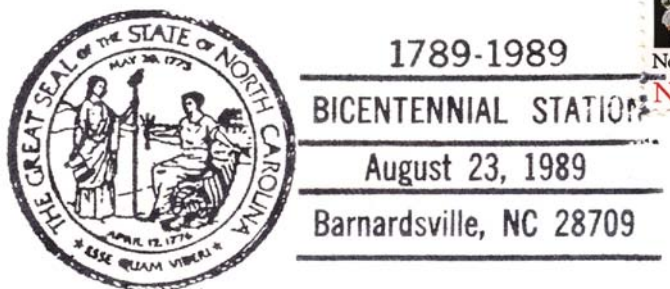


Type 18  
29.5 mm Red  
Self-Inking Postmarker (28709)  
25 Mar 1997



Type 19  
33.5 mm Black  
Self-Inking Postmarker (28709)  
1 Sep 2006

Temporary Station Cancels  
Bicentennial Station



Type 1  
86 x 37 mm Black  
(28709)  
23 Aug 1989

## BUNCOMBE COUNTY

### Beech

(Buncombe)

Alfred M. Penland	29 Jul 1888
J. H. McDowell	22 Nov 1897
Appointment rescinded	3 Dec 1897
Alfred M. Penland continued	3 Dec 1897
Francis A. Penland	12 Dec 1898
Lucious D. Maney	3 Oct 1901
Discontinued	31 Jan 1919
Lucious D. Maney	24 Feb 1919
Discontinued	31 Aug 1931
Mail to Weaverville	

*Beech N.C.  
Jan 29 98*

Manuscript  
29 Jan 1898



Type 1  
32.5 mm Black  
1910 Type B 4-Bar  
19 Sep 1917



Type 2  
32.5 mm Black  
1925 Type C/1 4-Bar  
31 Aug 1931

### Bee Tree

(Buncombe)

William G. Taylor	30 Apr 1907
Eric R. Wainwright	27 Dec 1910
Alfred J. Hamilton	15 May 1912
Herbert N. Crowell	21 Dec 1912
Robert C. Griggs (declined)	8 Apr 1916
Nellie M. Griggs	26 Aug 1916
Discontinued	15 Nov 1924
Mail to Swannanoa	



Type 1  
31 mm Black  
1906 Type A/1 4-Bar  
1 Jun 1908

M.O.B.  
(Money Order Business)



Type 1  
31 mm Magenta  
31 Mar 1920

## BUNCOMBE COUNTY

### Bell

(Buncombe)

George H. Bell	26 Jun 1883
Discontinued	1 Oct 1894
Benjamin F. Smith	10 Nov 1894
Discontinued	30 Aug 1902
Mail to Asheville	



Type 1  
32.5 mm Black  
27 Aug 1891

Bell N.C.

Manuscript  
7 Apr 1896

### Bellevue

(Buncombe)

Jesse Luther	10 Jun 1902
Daisy K. Lee	5 Jun 1903
Appointment rescinded	23 Sep 1903
Oscar K. Sames	23 Sep 1903
William S. Johnson	19 Aug 1904
Discontinued	30 Sep 1907
Mail to Marshall	

### Best

(Buncombe)

John A. Porter	9 Apr 1880
Thomas M. Porter	26 Mar 1883
Thomas J. Reed	4 Apr 1889
Changed to Bilton	4 Mar 1890



Type 1  
26 mm Black  
16 Jan 1884

*Bilton post office continued to use the Best cds after the name change for several weeks until shortly after Bilton was changed to Biltmore.*



Type 2  
29.5 mm Black  
8 Aug 1887



Type 3  
27 mm Black  
28 Mar 1890

# BUNCOMBE COUNTY

**Biltmore**, name changed from Bilton

(Buncombe)

Thomas J. Reed	20 Mar 1890
James M. Brookshire	23 Aug 1893
George W. Reed	1 Oct 1897
Frances J. Reed	1 Mar 1905
Byron J. Luther	1 Sep 1909
Horace McR. Gudger	2 May 1914
Clarence M. McCall	7 Feb 1923
Lorenzo D. Maney, Acting	15 Sep 1924
Lorenzo D. Maney	17 Jan 1925
William B. Hemphill, Acting	20 Oct 1925
William B. Hemphill	14 Apr 1926
Albert P. Davidson, Acting	3 Feb 1927
Albert P. Davidson	4 Jan 1928
Discontinued	31 Dec 1928
Mail to Asheville	

Became a branch and then a station of Asheville

Type 2 cds known used without date slug



Type 1  
32 mm Purple  
19 Apr 1890  
21 Apr 1890



Type 2  
28 mm Black  
4 Jun 1890  
28 Feb 1896

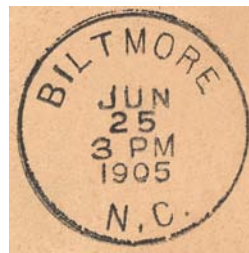
**DUE 2**



Type 3  
28 mm Black  
29 Mar 1897  
15 Nov 1902



Type 4  
29 mm Black  
Metal Duplex Type H2  
9 Apr 1901  
25 Sep 1904



Type 5  
30.5 mm Black  
25 Jun 1905  
14 Mar 1913



Type 6  
30.5 mm Black  
Metal Duplex Type H2  
21 Dec 1911

BUNCOMBE COUNTY

Biltmore (Cont.)

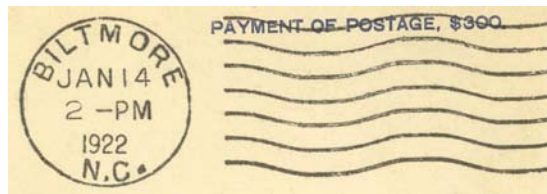
(Buncombe)



Type 7  
29 mm Black  
Metal Duplex Type H2  
6 Jul 1913  
5 Dec 1916



Type 8  
25 mm Black  
Metal Duplex Type E2  
9 May 1920  
13 Dec 1930



Type 9  
22.5 mm Black  
Columbia Machine  
Type G 1W  
14 Jan 1922  
20 Jan 1922



Type 10  
21 mm Black  
International Machine  
Type D30  
21 Dec 1928

Rural Station Cancels  
Kenilworth Rural Station  
1 Jul 1918  
15 Dec 1923



Type 1  
32.5 mm Black  
6 Aug 1919  
6 May 1921

BUNCOMBE COUNTY

Biltmore (Cont.)

(Buncombe)

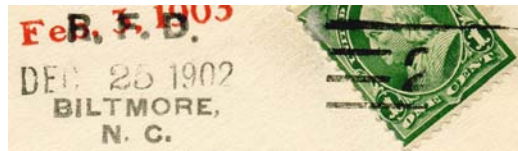
Receiving datestamp



Type R1  
29.5 mm Black  
8 Nov 1906  
24 Dec 1910

Rural Free Delivery

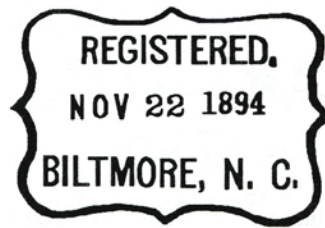
Type 1 Black ?



Type 1N(2) Black ?  
25 Dec 1902  
1904

Type 1M(2) Black ?  
1903

Registered



Type 1  
41 x 29 mm Magenta ?  
22 Nov 1894



Type 2  
29 mm Magenta  
9 Jun 1921

## BUNCOMBE COUNTY

### Biltmore (Cont.)

(Buncombe)

M.O.B.  
(Money Order Business)



Type 1  
29 mm Magenta  
14 Jul 1913

### Bilton, name changed from Best

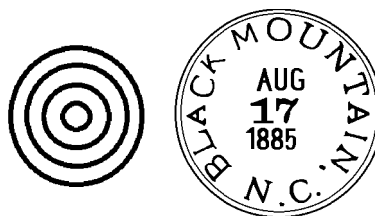
(Buncombe)

Thomas J. Reed	4 Mar 1890
Name changed to <b>Biltmore</b>	20 Mar 1890

### Black Mountain, name changed from Gray Eagle

(Buncombe)

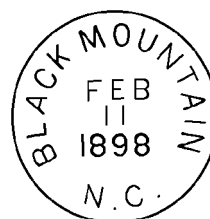
James M. Stepp	27 Jan 1880
Mary A. Daugherty	12 Feb 1886
Thomas L. McHargue	17 May 1889
Joseph M. Stepp	25 Jan 1893
Thorton W. Ingle	30 Jun 1897
Bertha L. Boone	3 Oct 1901
George W. Stepp	6 Oct 1905
W. C. Hall	26 May 1913
Annie L. Trexler, Acting	14 Sep 1919
Julius A. Heilig	18 Nov 1920
Annie L. Trexler, Acting	1 Mar 1921
Amelia B. Stepp	5 Jan 1922
Howard A. Kerlee, Acting	10 Nov 1934
Howard A. Kerlee	16 Jan 1935
Charles L. Greer, Acting	5 Jun 1959
Robert E. Williams, Acting	25 Mar 1961
Robert E. Williams	21 Sep 1961
John C. Jackson Officer-In-Charge	5 Nov 1971
John C. Jackson	24 Jun 1972
Roy L. Harris Officer-In-Charge	12 Oct 1973
George H. Watt Officer-In-Charge	22 Feb 1974
Roy L. Harris Jr.	13 Apr 1974
W. E. Calloway Officer-In-Charge	1 Sep 1978
Everette H. Trammel Officer-In-Charge	28 Dec 1978
Ernest Keith Nelon	11 Aug 1979
Mary D. Ault Officer-In-Charge	29 Sep 1992



Type 1  
28 mm Dark Blue  
17 Aug 1885  
30 Sep 1885



Type 2  
29 mm Purple Duplex  
14 Jul 1893  
20 Sep 1894



Type 3  
27.5 mm Black  
11 Feb 1898  
23 Apr 1901

## BUNCOMBE COUNTY

### Black Mountain (Cont.)

(Buncombe)

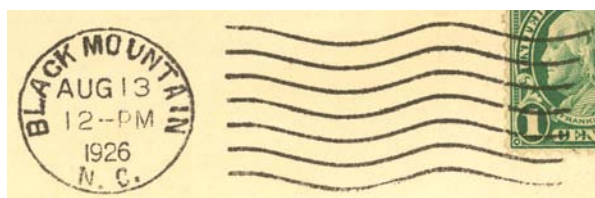
Barry W. Gouge	20 Feb 1993
Thomas R. Huntley Officer-In-Charge	20 Apr 1999
Gary W. Stevens Officer-In-Charge	2 Jun 1999
Gary W. Stevens	28 Aug 1999
Victor M. Cruz	30 Jul 2011
Michael W. Griffin	23 Mar 2013



Type 4  
29 mm Black  
Metal Duplex Type H2  
10 Mar 1909  
24 Jul 1912



Type 5  
30 mm Black  
Metal Duplex Type H2  
27 Jul 1910  
12 Nov 1920

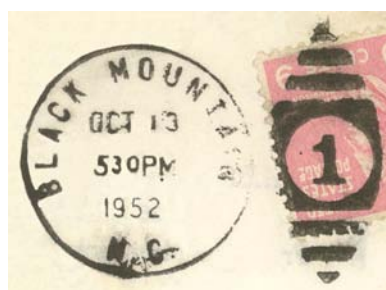


Type 6  
23 mm Black  
Columbia Machine  
Type G 1W  
22 Dec 1922  
22 Mar 1928

Type 7  
20 mm Black  
Universal Machine  
Type DT 200  
25 May 1928



Type 8  
21 mm Black  
International Machine  
Type D30  
8 Apr 1932  
31 Oct 1961

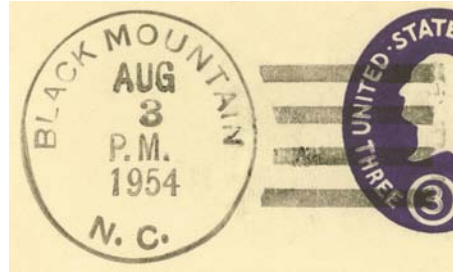


Type 9  
30 mm Black  
Metal Duplex Type E2  
(Numeral 1)  
17 Jan 1949  
13 Oct 1952

# BUNCOMBE COUNTY

Black Mountain (Cont.)

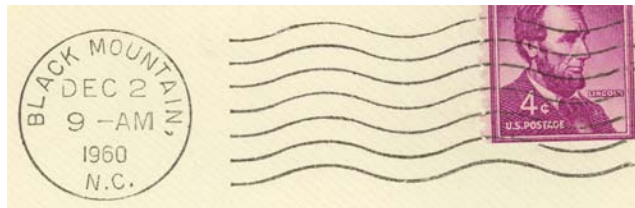
(Buncombe)



Type 10  
31 mm Black  
1936 Type F/1 4-Bar  
26 Oct 1953  
8 Jun 1955



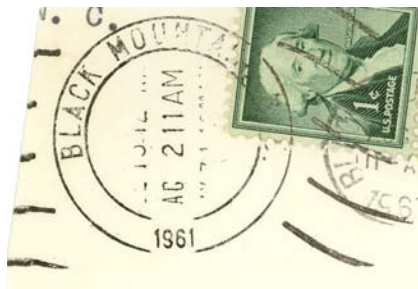
Type 11  
28 mm Magenta  
20 Mar 1954



Type 12  
22 mm Black  
International Machine  
Type AT/S 2721  
16 Apr 1957  
9 Apr 1966



Type 13  
29.5 mm Magenta  
19 Jan 1959



Type 14  
31 mm Black  
Hanley hand-held roller  
21 Aug 1961

# BUNCOMBE COUNTY

Black Mountain (Cont.)

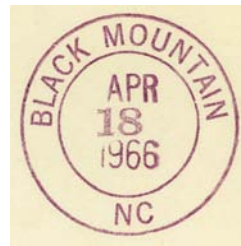
(Buncombe)



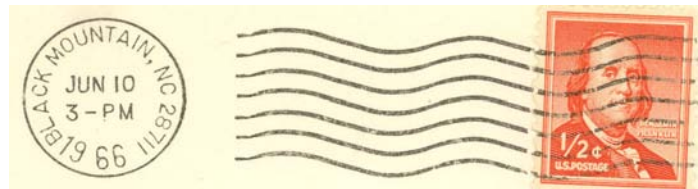
Type 15  
 20.5 mm Black  
 Universal Machine  
 Type DT 300  
 24 Nov 1962  
 19 Mar 1964



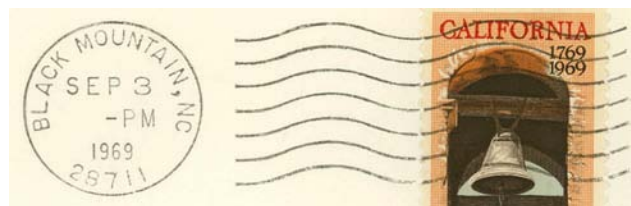
Type 16  
 20.5 mm Black  
 Universal Machine  
 Type DTSz 300 (28711)  
 13 Nov 1965  
 23 Jan 1978



Type 17  
 28.5 mm Magenta  
 18 Apr 1966



Type 18  
 21 mm Black  
 International Machine  
 Type Nz30 (28711)  
 10 Jun 1966  
 12 Jul 1967



Type 19  
 22 mm Black  
 International Machine  
 Type ATS/z 2721 (28711)  
 28 Mar 1967  
 2 Jan 1976

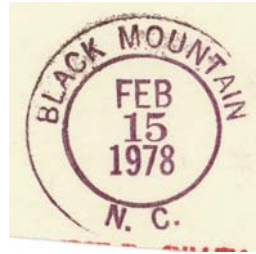


Type 20  
 32.5 mm Black  
 Hanley hand-held roller  
 2 Jan 1976  
 13 Feb 1976

BUNCOMBE COUNTY

Black Mountain (Cont.)

(Buncombe)



Type 21  
30.5 mm Magenta  
15 Feb 1978



Type 22  
28 mm Magenta  
9 Mar 1981



Type 23  
33 mm Black  
1963 Type F/2 4-Bar (28711)  
12 Mar 1990



Type 24  
29 mm Magenta  
17 Oct 1991



Type 25  
29.5 mm Red  
Self-Inking Postmarker  
(28711)  
25 Mar 1997

BUNCOMBE COUNTY

Black Mountain (Cont.)

(Buncombe)

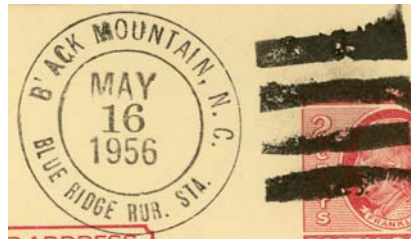


Type 26  
30.5 mm Red  
Self-Inking Postmarker (28711)  
6 Sep 2006

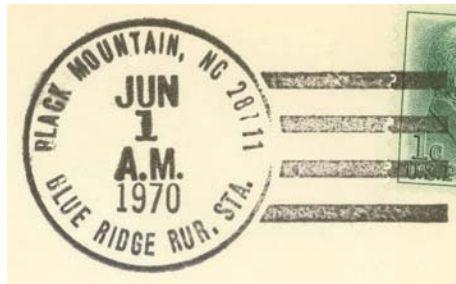


Type 27  
30.5 mm Red  
Self-Inking Postmarker (28711)  
2 Mar 2009

Rural Station Cancels  
Blue Ridge Rural Station  
16 May 1955  
1974?

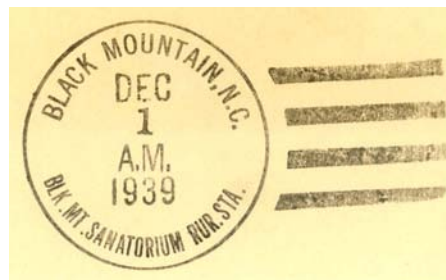


Type 1  
30 mm Black  
9 Jun 1955  
31 Aug 1962



Type 2  
33 mm Black  
1 Jun 1970

Black Mountain Sanatorium Rural Station  
1 Dec 1938  
Jul 1994



Type 1  
34 mm Black  
15 Sep 1939  
5 Apr 1940

# BUNCOMBE COUNTY

## Black Mountain (Cont.)

(Buncombe)

### Rural Station Cancels (Cont.)

#### Black Mountain Sanatorium Rural Station (Cont.)



Type 2  
34 mm Black  
5 May 1949  
24 Aug 1950



Type 3  
32 mm Black  
6 Oct 1951  
16 Jan 1952



Type 4  
30 mm Magenta  
8 Jun 1955  
13 May 1963



Type 5  
28 mm Magenta  
28 Feb 1967  
8 Jan 1973

M.O.B.  
(Money Order Business)



Type 1  
30 mm Magenta  
30 Nov 1939

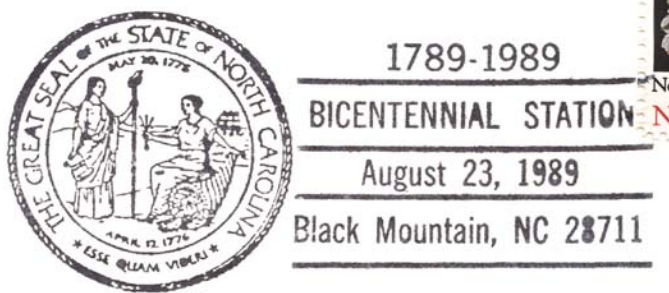
# BUNCOMBE COUNTY

## Black Mountain (Cont.)

(Buncombe)

### Temporary Station Cancels

Bicentennial Station



Type 1  
85 x 37 mm Black  
23 Aug 1989

Parcel Post



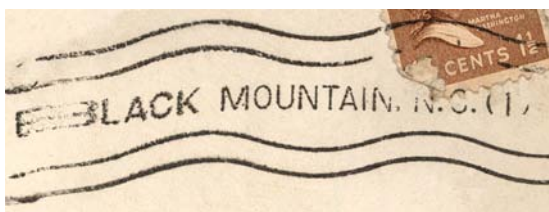
Type 1  
28.5 mm Black  
30 Nov 1939

Parcel Post



Type 1  
28 mm Purple  
20 Jul 1943

### Third Class Cancelers



Type 1  
61 x 3 mm Black  
Continuous roller (1)  
1943  
10 Dec 1980

## Blackwell's Springs

(Buncombe)

David C. Parris	9 Jul 1884
David A. Blackwell	8 Dec 1884
Discontinued	15 Jun 1885
David A. Blackwell	29 Jul 1885
Catharine A. Reaves	9 Apr 1886
Thomas A. Morri	2 Aug 1887
Discontinued	30 Nov 1887
Papers to Alexander	

## BUNCOMBE COUNTY

### Bluemont

(Buncombe)

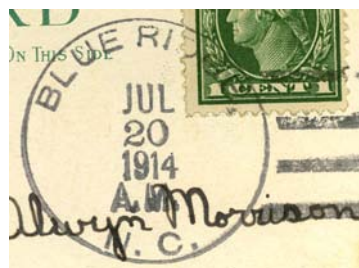
Mary E. Tucker	15 Aug 1907
Appointment rescinded	11 Dec 1908
Stanley B. Moore	22 May 1909
Name changed to <b>Ridgecrest</b>	13 Jan 1912

### Blue Ridge

(Buncombe)

Ray H. Legate	28 Jul 1913
James P. Parker	15 May 1916
Charles E. Boone, Acting	30 Apr 1927
Charles E. Boone	4 Jan 1928
Maggie C. Allison, Acting	30 Jan 1932
Maggie C. Allison	19 Jan 1933
Bascombe N. Allen	18 May 1939
Fannie L. Allen	1 May 1947
Discontinued	30 Apr 1955

Mail to Black Mountain

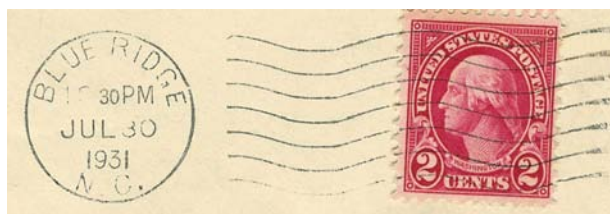


Type 1  
32 mm Black  
1910 Type B 4-Bar  
10 Sep 1910  
20 Jul 1914

Became a rural station of Black Mountain



Type 2  
29.5 mm Black  
Metal Duplex Type H2  
14 Jun 1922  
1 Aug 1942



Type 3  
22 mm Black  
Columbia Machine  
Type G 1W  
5 Jul 1929  
9 Feb 1940



Type 4  
22 mm Black  
International Machine  
Type AT/S 2721  
19 Aug 1940  
15 Sep 1953

## BUNCOMBE COUNTY

### Brankton

(Buncombe)

George B. Dunkel      24 May 1901  
 James B. Bradley     21 Dec 1914  
 Discontinued        15 Jun 1915  
 Mail to Weaverville



Type 1  
 28.5 mm Black  
 2 Feb 1906  
 12 Jun 1910

### Breeze

(Buncombe)

Samuel M. Redman     21 Jun 1889  
 A. F. Walton          31 Aug 1889  
 Discontinued        7 Feb 1890  
 Mail to Asheville

### Brevardsville

(Buncombe)

James Brevard        19 May 1830  
 Discontinued        10 May 1833

*Brevardsville  
 7<sup>th</sup> April*

Manuscript  
 7 Apr 1831

*J. Brevard T. M.*

Postmaster frank  
 7 Apr 1831

### Brooks, name change from Glen Coe

(Buncombe)

Samuel Brooks        6 Feb 1882  
 Discontinued        27 May 1891  
 Mail to Demia

## BUNCOMBE COUNTY

### Brown Knob

(Buncombe)

Hiram W. Davis	11 Oct 1875
Julia M. Davis	11 Feb 1878
Discontinued	13 Apr 1883
Mail to Hominy Creek	

### Buena Vista

(Buncombe)

Noble A. Penland	28 Jul 1891
Gardner M. Garren	10 Sep 1900
Laura V. Ford	9 Jun 1903
Discontinued	31 May 1906
Mail to Biltmore	



Type 1  
28 mm Black  
21 Feb 1893  
21 Jun 1903

### Busbee

(Buncombe)

William R. Murray	30 Jan 1873
John C. Murray	24 Mar 1890
John B. Sumner	12 Jul 1898
Discontinued	29 Jul 1898
Goodson M. Roberts	2 Nov 1900
Discontinued	15 Dec 1902
Mail to Skyland	

*Busbee, N.C.  
Sept 6/76*

Manuscript  
5 Aug 1876  
1 May 1882



Type 1  
26 mm Black  
27 Jan 1889

### Camarhea

(Buncombe)

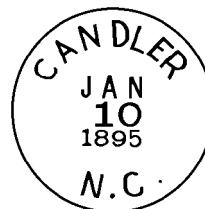
Tilden Harris (declined)	11 Nov 1915
Fred Callaway	24 Mar 1916
Appointment rescinded	30 Mar 1916

# BUNCOMBE COUNTY

## Candler

(Buncombe)

Thomas W. Shelton	4 Nov 1887
Bonnie E. Candler	16 Sep 1889
James M. Gallaway	25 Sep 1893
Arthur L. Morgan	31 Jul 1896
Edgar W. Candler	20 Dec 1897
A. Zebulon Wright	4 May 1914
Riley W. King	22 Sep 1922
Clendenon D. Mallonee	27 Jul 1935
Carl Landry Thrash, Acting	31 Aug 1950
Byron E. Brenton, Acting	31 Aug 1951
Byron E. Brenton	26 Sep 1951
Thomas C. Luther, Acting	1 Jun 1956
James R. Frady, Acting	21 Mar 1958
Lemuel V. Young, Acting	12 May 1961
Lemuel V. Young	22 May 1962
Keith Nelson Officer-In-Charge	9 Jan 1976
C. Landry Thrash Officer-In-Charge	26 Jun 1976
Donald T. Andrews	29 Jan 1977
Tommy W. Jones Officer-In-Charge	30 Sep 1992
H. Alvin Brown Officer-In-Charge	20 Jan 1993
Tommy W. Jones Officer-In-Charge	19 Feb 1993
Roy E. Blankenship	20 Feb 1993
Janice L. Ketner Officer-In-Charge	9 Aug 2000
Michael P. Goforth	2 Dec 2000
Carrie J. Butler Officer-In-Charge	11 Apr 2007
Beverly K. Young	15 Mar 2008



Type 1  
27 mm Black  
10 Jan 1895  
8 Apr 1900



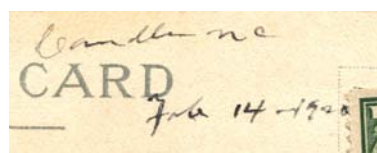
Type 2  
29 mm Black  
22 Nov 1904  
22 Oct 1906



Type 3  
30.5 mm Black  
1906 Type A/1 4-Bar  
28 Oct 1907  
21 Jun 1920



Type 4  
32 mm Black  
1910 Type B 4-Bar  
12 Oct 1914



Manuscript  
14 Feb 1920

# BUNCOMBE COUNTY

Candler (Cont.)

(Buncombe)



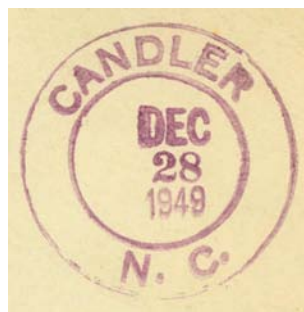
Type 5  
29 mm Black  
Metal Duplex Type H2  
8 Mar 1921



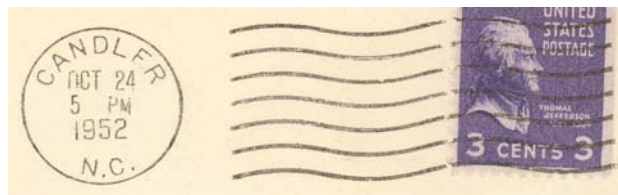
Type 6  
22.5 mm Black  
Columbia Machine  
Type G 1W  
13 Feb 1934  
7 Sep 1944



Type 7  
22 mm Black  
International Machine  
Type AT/S 2721  
21 Dec 1945  
15 Jul 1947



Type 8  
36 mm Magenta  
28 Dec 1949



Type 9  
21 mm Black  
Universal Machine  
Type DT 200K  
24 Oct 1952  
21 Dec 1955



Type 10  
20.5 mm Black  
Universal Machine  
Type DT 300  
17 Oct 1956  
9 Aug 1965

# BUNCOMBE COUNTY

Candler (Cont.)

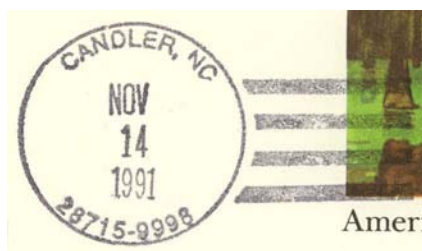
(Buncombe)



Type 11  
20.5 mm Black  
Universal Machine  
Type DTSz 300 (28715)  
3 Feb 1967  
15 Dec 1993



Type 12  
32 mm Black  
1963 Type F/2 4-Bar (28715)  
17 Oct 1968  
25 Aug 1982



Type 13  
30 mm Black  
Self-Inking Postmarker  
Type 4B (28715-9998)  
14 Nov 1991  
14 Jun 1996



Type 14  
29 mm Red  
Self-Inking Postmarker (28715)  
19 Mar 1997



Type 15  
31 mm Black  
Self-Inking Postmarker (28715)  
8 Sep 2006

BUNCOMBE COUNTY

Candler (Cont.)

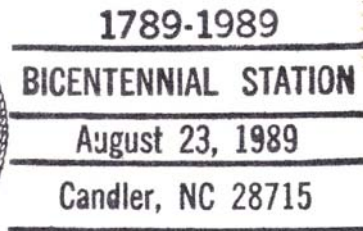
(Buncombe)



Type 16  
33.5 mm Red  
Self-Inking Postmarker (28715)  
8 Sep 2006

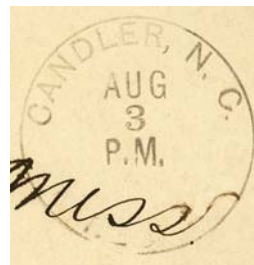
Temporary Station Cancels

Bicentennial Station



Type 1  
86.5 x 36.5 mm Black  
(28715)  
23 Aug 1989

Receiving datestamp



Type R1  
31 mm Black  
3 Aug 190x

Rural Free Delivery



Type 2F (2) Black  
6 Mar 1903

## BUNCOMBE COUNTY

### Canto

(Buncombe)

Jeremiah Roberts	24 Jan 1884
Henry C. Randall	14 Feb 1888
John M. Carver	19 Dec 1889
Edith Randall	28 Oct 1897
John F. Kuykendall	5 Dec 1903
Oscar K. Sams	9 Dec 1904
Henry C. Randall	31 Aug 1908
Discontinued	15 Mar 1929
Mail to Leicester	



Type 1  
28 mm Black  
Doane Type 2-<sup>2</sup>  
13 Dec 1906

### Carriers Springs

(Buncombe)

Russel J. Gaston	10 Dec 1887
Benjamin F. Burnside	25 Jul 1889
Discontinued	8 Apr 1890
Thomas F. Stairus	11 May 1896
Narcisse Plamondon	31 Jul 1896
Discontinued	6 Feb 1900
Mail to Acton	



Type 1  
27 mm Black  
12 Aug 1889  
6 Oct 1893



Type 2  
28.5 mm Black  
3 May 1899

### Cathey's Creek

(Buncombe)

Benjamin Wilson	30 Aug 1826
James Hamblen	27 Mar 1837
To Henderson County	in 1838

## BUNCOMBE COUNTY

### Catoosa

(Buncombe)

George F. Brock            24 Jun 1891  
Discontinued            26 Oct 1895  
Mail to Candler

### Claytonville, Claytonville

(Buncombe)

Lambert Clayton        12 Mar 1806  
David Johnson            by 1813  
Discontinued            by 1816  
John Clayton            30 Aug 1826  
Martin A. Gash            26 Jan 1836  
To Henderson County    in 1838

### Cleelum

(Buncombe)

Willie H. Garrett        19 Aug 1902  
Discontinued            15 May 1912  
Mail to Sandy Mush

### Cletus

(Buncombe)

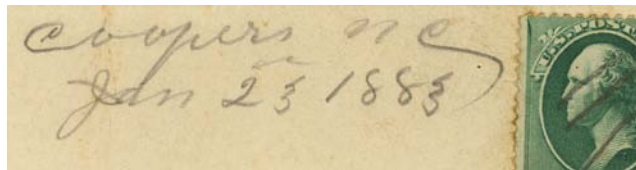
Cletus D. Buckner        1 Oct 1898  
Discontinued            30 Apr 1914  
Mail to Democrat

## BUNCOMBE COUNTY

### Coopers, name changed from Keys

(Buncombe)

J. W. Gladwell	30 Jan 1880
Anna L. Gladwell	11 Jan 1881
John M. Maynard	10 Sep 1883
William H. Wilson	15 Jan 1884
Emma R. Davidson	15 Jul 1889
moved to Swannanoa	14 Jul 1891
Discontinued	16 Jul 1891



Manuscript  
23 Jan 1883



Type 1  
27 mm Black  
17 Mar 1885  
18 Oct 188x

### Deaver's View

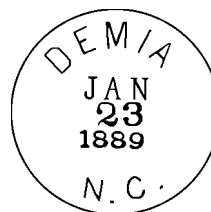
(Buncombe)

Robert A. Hutsell	25 Nov 1874
J. M. Hawkins	10 May 1875
Discontinued	27 May 1875

### Demia

(Buncombe)

George W. Davis	5 May 1888
Robert Williams	7 Jun 1890
Discontinued	23 Sep 1891
Leander E. Davis	26 Jul 1898
Discontinued	31 Mar 1902
Mail to Inanda	



Type 1  
27.5 mm Black  
23 Jan 1889  
29 Jan 1889

### Democrat

(Buncombe)

John A. Carter	18 Nov 1847
J. A. Carter, CSA	1 Aug 1861
CSA office closed on or before	30 Apr 1865
Harriet E. Carter	16 Mar 1866
Discontinued	26 Sep 1867
Jane A. Carter	29 Oct 1867
Julia A. C. Carter	10 Apr 1872
John A. Carter	17 May 1878
Israel K. Buckner	27 Apr 1889



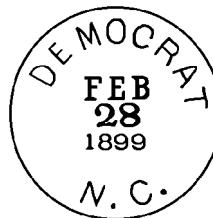
Manuscript  
21 Jun 1867  
28 Sep 1869

# BUNCOMBE COUNTY

## Democrat (Cont.)

(Buncombe)

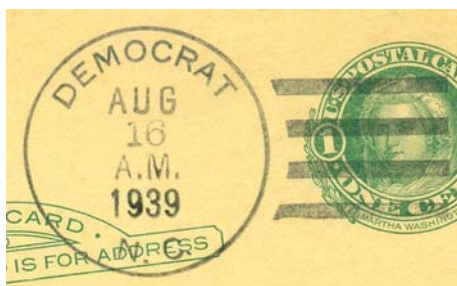
Gideon H. McKinney	26 Jul 1893
Israel K. Buckner	15 Jun 1897
John F. McKinney	2 Apr 1914
James P. Dillingham, Acting	7 Jan 1916
Israel K. Buckner, Acting	22 Apr 1925
Israel K. Buckner	25 Nov 1925
Mrs. Cecil F. Buckner, Acting	1 Apr 1927
Lula McMahan, Acting	16 Mar 1928
Lula McMahan	19 Mar 1928
Sallie Jo Blanton, Acting	1 Apr 1949
Sallie Jo Blanton	6 May 1949
Discontinued	31 Aug 1953
Mail to Stocksville	



Type 1  
28 mm Black  
12 Jun 1896  
24 Aug 1903



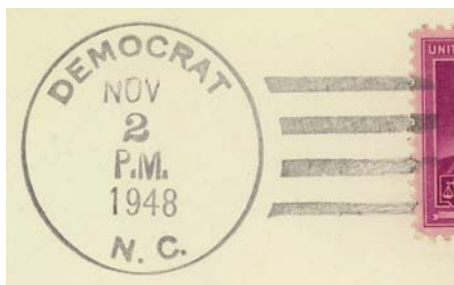
Type 2  
31 mm Black  
Doane Type 3-2  
27 Apr 1908  
9 Mar 1910



Type 3  
32 mm Black  
1930 Type F/1 4-Bar  
11 Mar 1936  
16 Aug 1939



Type 4  
32.5 mm Black  
1936 Type F/1 4-Bar  
3 Aug 1950



Type 5  
32 mm Black  
1936 Type F/1 4-Bar  
13 Aug 1942  
31 Aug 1953

## BUNCOMBE COUNTY

### Democrat (Cont.)

(Buncombe)

M.O.B.  
(Money Order Business)

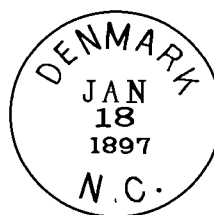


Type 1  
31.5 mm Magenta  
25 Feb 1920

### Denmark

(Buncombe)

J. Henry Reed	18 Aug 1890
Samuel Jeffrey	9 Dec 1895
Emma Schooley	19 Oct 1899
Name changed to <b>Farm School</b>	30 Apr 1902



Type 1  
27.5 mm Black  
18 Jan 1897  
21 Oct 1898

### Dick's Creek

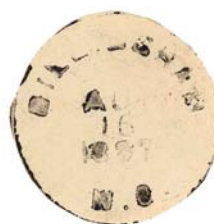
(Buncombe)

William F. Wells	8 May 1857
No record of CSA operation	
Discontinued	23 Jun 1866

### Dillingham

(Buncombe)

Thomas S. Dillingham	21 Apr 1887
Alfred C. Dillingham	23 Nov 1888
Martha M. Riddle	16 Jun 1897
Glen L. Whitaker	11 Apr 1898
George M. Whitaker	15 Apr 1905
James W. Dillingham	5 Feb 1914
Discontinued	31 May 1928
James W. Dillingham	10 Jun 1929
Discontinued	15 Mar 1935
Mail to Democrat	



Type 1  
27.5 mm Black  
16 Aug 1897

# BUNCOMBE COUNTY

## Dillingham (Cont.)

(Buncombe)



Type 2  
32.5 mm Black  
1910 Type B 4-Bar  
11 Nov 1921

## Dome, from McDowell County

(Buncombe)

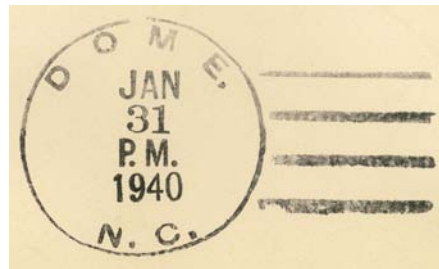
Eliza J. Ledbetter in 1925  
Discontinued 31 Jan 1940  
Mail to Black Mountain



Type 1  
31 mm Black  
Metal Duplex Type H2  
8 Nov 1917



Type 2  
34 mm Black  
1931 Type C/2 4-Bar  
8 Jan 1938  
12 Feb 1938



Type 3  
32 mm Black  
3 Oct 1939  
31 Jan 1940

## BUNCOMBE COUNTY

### Dunsmore

(Buncombe)

Thomas H. Howell	10 May 1888
David M. Watts	31 Jul 1890
Thomas H. Howell	26 Apr 1893
Anne O'Kelly	7 Jul 1898
Lemuel Y. Israel	23 Dec 1902
Discontinued	30 Jan 1904
Mail to Candler	

### Edneyville, Ednyville (Private office)

(Buncombe)

Samuel Edney	15 Apr 1828
Discontinued	16 Jun 1831
To Henderson County	1842

### Emma

(Buncombe)

Louisa E. Boyd	29 Sep 1880
Discontinued	25 Oct 1881
David J. McClellan	22 Sep 1884
Discontinued	15 Nov 1905
Mail to Asheville	
Charles D. Miller	15 Oct 1925
Jesse D. Young	23 Jul 1931
Clemmie Miller, Acting	18 Feb 1932
Devereaux B. Williams	16 Mar 1933
Appointment rescinded	16 Mar 1933
Robbie L. Freeman	20 Jun 1933
Appointment rescinded	5 Aug 1933
Discontinued	15 Aug 1933
Mail to Asheville	



Type 1  
27 mm Black  
1 Dec 1892  
20 Aug 1893



Type 2  
27.5 mm Black  
30 Jan 1901  
30 Apr 1902

# BUNCOMBE COUNTY

## Enka

(Buncombe)

Byron J. Luther	25 May 1929
Russell A. Crowell, Acting	19 Sep 1934
Russell A. Crowell	16 Jan 1935
Bascom W. Rutherford, Acting	1 Apr 1946
Bascom W. Rutherford	2 Jul 1947
Darlene L. Kirk	9 Nov 1985
G. W. Wiley Officer-In-Charge	13 Mar 1987
Betty Joan Rice	20 Jun 1987
Sharon R. Coffey Officer-In-Charge	25 May 2000
Betty B. Bailey	26 Aug 2000
Nakia L. Alexander Officer-In-Charge	12 Jun 2009
Elizabeth R. Dalton	30 Jun 2012



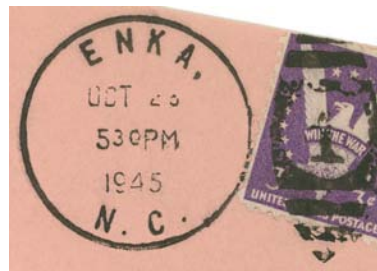
Type 1  
30.5 mm Black  
1930 Type E 4-Bar  
19 Oct 1932



Type 2  
34 mm Black  
1931 Type C/2 4-Bar  
12 Jan 1934  
4 Apr 1934



Type 3  
22 mm Black  
International Machine  
Type AT/S 10  
25 Nov 1938  
28 Oct 1948



Type 4  
30.5 mm Black  
Metal Duplex Type E2  
25 Oct 1945



Type 5  
21 mm Black  
Universal Machine  
Type DT 200  
30 Apr 1951  
1964

BUNCOMBE COUNTY

Enka (Cont.)

(Buncombe)



Type 6  
29 mm Magenta  
9 Dec 1954



Type 7  
30.5 mm Magenta  
13 Aug 1964



Type 8  
20.5 mm Black  
Universal Machine  
Type DTS/z 200 (28728)  
1965  
1974



Type 9  
33.5 mm Black  
1963 Type F/2 4-Bar (28728)  
17 Sep 1973  
18 Aug 1975



Type 10  
32.5 mm Black  
1963 Type F/2 4-Bar (28728)  
29 Dec 1978

BUNCOMBE COUNTY

Enka (Cont.)

(Buncombe)



Type 11  
36 mm Black  
Non-standard 4-Bar  
6 Feb 1984



Type 12  
31.5 mm Black  
1963 Type F/2 4-Bar (28728)  
23 Aug 1991



Type 13  
34.5 mm Black  
Self-Inking Postmarker (28728)  
19 Mar 1997



Type 14  
29.5 mm Red  
Self-Inking Postmarker (28728)  
19 Mar 1997



Type 15  
31.5 mm Black  
Self-Inking Postmarker  
(28728-9998)  
2 Nov 2006

## BUNCOMBE COUNTY

### Enka (Cont.)

(Buncombe)

Third Class Cancelers



Type 1  
34.5 x 14 mm Black  
192x

### Ewart

(Buncombe)

Francis M. Redman	2 Nov 1891
Cornelia B. Keith	25 May 1894
Robert A. Pittillo	5 Sep 1896
Discontinued	7 Nov 1896
Mail to Fairview	

### Facerock

(Buncombe)

Andrew B. Dotson	25 Jun 1883
Discontinued	14 Feb 1901
Mail to Fairview	

### Fairview

(Buncombe)

R. W. Porter	11 Sep 1835
William Whitaker	15 Oct 1836
James Brevard	23 May 1842
Solomon Whitaker	27 Apr 1846
William B. McIntire	6 Feb 1850
John N. Brank	26 Dec 1850
James Ownby	24 Oct 1851
Alfred B. Head	14 Aug 1855
Laughsen A.A. Lanning	30 Oct 1856
William Lankford	1 Aug 1860
No record of CSA operation	
Naoma Smith	6 Apr 1866
Nathan Lankford	29 Jul 1868
Lasson A. Lanning	12 Jan 1872
James M. Shuford	21 Apr 1873

*Fairview N.C.*

Manuscript  
30 Dec 1854  
25 May 1893



Type 1  
28 mm Black  
29 Mar 1897

# BUNCOMBE COUNTY

## Fairview (Cont.)

(Buncombe)

Jonathan Ashworth	4 Jun 1873
Kittie D. Deaver	25 Jun 1873
Jason Ashworth	3 Jun 1874
William R. Freeman	31 Aug 1885
J. Will Jones	14 Apr 1893
Mary McD. Jones	11 Apr 1898
Henry Grant	6 Aug 1902
Mary E. Jones	10 Feb 1910
James W. Jones	30 Dec 1910
Pinkney O. Ferrell	2 Apr 1914
Carre M. Boykin	6 Aug 1926
Mae Ellen Dotson, Acting	31 Oct 1957
Louise N. Blankenship, Acting	14 Apr 1961
Louise N. Blankenship	17 Jun 1963
Malee M. Keller	31 Mar 1984
Harold Henderson Officer-In-Charge	4 Jan 1988
David E. Stepp	7 May 1988
Yvonne H. Logan Officer-In-Charge	24 Mar
1993 Yvonne H. Logan	15 May 1993
Lori A. Price Officer-In-Charge	1 Jul 1996
Paul N. Moreno	17 Aug 1996
Deborah L. Henderson	19 Nov 2011
Norman L. Inch	6 Oct 2012



Type 2  
31 mm Black  
1906 Type A/1 4-Bar  
11 May 1907  
24 Jul 1908



Type 3  
31.5 mm Black  
1908 Type A/2 4-Bar  
4 Jan 1910  
3 Aug 1916



Type 4  
32 mm Black  
1910 Type B 4-Bar  
11 Oct 1916



Type 5  
28.5 mm Black  
Metal Duplex Type H2  
10 Jan 1923

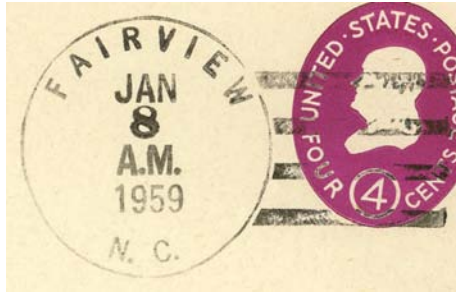


Type 6  
34 mm Black  
1936 Type F/1 4-Bar  
3 Oct 1940  
1 May 1951

BUNCOMBE COUNTY

Fairview (Cont.)

(Buncombe)



Type 7  
33.5 mm Black  
1936 Type F/1 4-Bar  
8 Jan 1959



Type 8  
35 mm Black  
Double ring  
18 Jun 1960  
19 Jun 1967



Type 9  
32 mm Black  
Hanley hand-held roller (28730)  
6 Apr 1968  
16 May 1979



Type 10  
33 mm Black  
1963 Type F/2 4-Bar (28730)  
6 Jun 1972  
16 May 1979



Type 11  
31 mm Black  
1963 Type F/2 4-Bar (28730)  
4 Jun 1980  
26 Jun 1982

BUNCOMBE COUNTY

Fairview (Cont.)

(Buncombe)



Type 12  
34.5 mm Black  
Self-Inking Postmarker  
Type 2A (28730)  
22 Sep 1988



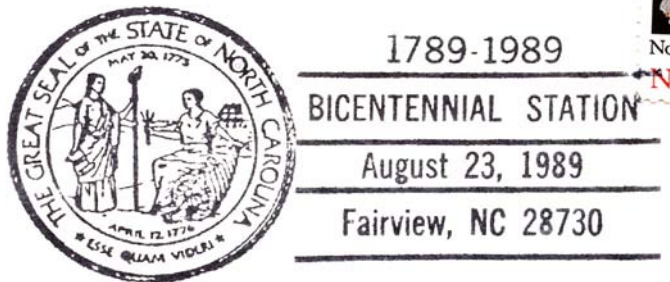
Type 13  
28 mm Red  
Self-Inking Postmarker (28730)  
3 Sep 1993  
22 Oct 1996



Type 14  
31 mm Red  
Self-Inking Postmarker (28730)  
3 Nov 2006

Temporary Station Cancels

Bicentennial Station



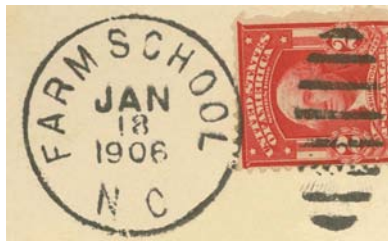
Type 1  
86 x 36.5 mm Black  
(28730)  
Post office name typed in  
23 Aug 1989

## BUNCOMBE COUNTY

### Farm School, name changed from Denmark

(Buncombe)

Emma Schooley	30 Apr 1902
Junetta B. Delzell	15 Dec 1902
Alma E. Joslyn	10 Sep 1908
Catherine Mars	10 Sep 1919
Ivy L. Brown	17 Jul 1923
Discontinued	30 Jun 1924
Mail to Swannanoa	



Type 1  
29 mm Black  
Metal Duplex Type H2  
18 Jan 1906



Type 2  
31 mm Black  
1910 Type B 4-Bar  
21 Jan 1913  
3 Feb 1916

Receiving datestamp



Type R1  
31 mm Black  
1 Jun 1908

### Flat Creek

(Buncombe)

G. J. D. Garrison	22 Jul 1851
G.J.D. Garrison, CSA	Bibliog. #19
CSA office closed on or before	30 Apr 1865
Federal office discontinued	6 Dec 1866
Henry C. Roberts	11 Dec 1878
Marion Roberts	3 Jan 1879
James R. Brigmon	16 Feb 1883
Laretta G. Hughey	20 Jun 1889
James R. Brigman	4 Aug 1893
Ettie B. Brigman	24 Nov 1899
Name changed to <b>Homerville</b>	27 Aug 1903

## BUNCOMBE COUNTY

### Flat Rock

(Buncombe)

John Davis	29 Jun 1829
William Murray	2 Mar 1831
Alexander Pearson	12 Jan 1835
P. A. Summey	16 May 1836
George Summey	12 Mar 1838
To Henderson County	in 1838

*Gift to Rock  
5 Sep 1830  
30 Apr 1837*

Manuscript  
5 Sep 1830  
30 Apr 1837

### Forest Home

(Buncombe)

William N. Morrison	12 Mar 1861
No record of CSA operation	
Discontinued	6 Dec 1866

### Fortune

(Buncombe)

James T. Garren	29 Jul 1885
Albertus B. Fortune	27 Nov 1885
Thomas L. Harris	11 Nov 1887
Mary A. Alexander	15 Mar 1888
Discontinued	26 Dec 1888
Papers to Shope	

### Foxville

(Buncombe)

Elias M. Jones	12 Aug 1880
Discontinued	11 Sep 1896
Papers to Vanceville	

## BUNCOMBE COUNTY

### French Broad

(Buncombe)

James M. Alexander	1 Sep 1832
Discontinued	24 Aug 1845
James M. Alexander	24 Jul 1846
Jackson S. Burnett	27 Oct 1853
J. S. Burnett, CSA	15 Mar 1862
CSA office closed on or before	30 Apr 1865
Federal office is continued	6 Dec 1866
Alfred M. Alexander	9 Dec 1872
Marcus W. Robertson	10 Jan 1878
Name changed to <b>Alexander</b>	13 Sep 1881

*French Broad N.C.  
Nov 19 1840*

Manuscript  
23 Nov 1839  
4 May 1852

Confederate

*French Broad N.C.  
June 28 1862*

Manuscript  
21 Jun 186x

*French Broad N.C.  
Aug 9<sup>th</sup> 1877*

Manuscript  
9 Aug 1877

### Fulton

(Buncombe)

James E. Chandler	13 Apr 1901
James G. Roberts	25 Oct 1901
Discontinued	15 Nov 1906
Mail to Jupiter	



Type 1  
28 mm Black  
18 Mar 1902

### Gem

(Buncombe)

Francis M. Burgess	15 Jan 1886
Martian A. King	4 Jun 1889
Luther R. Giles	18 Oct 1893
Harlen F. Duckett	17 Jan 1898
Lela Duckett	20 Jun 1906
Mack O. Clark	29 Aug 1906
John B. Hill	21 Dec 1914
Mary D. Hill	19 May 1921
Denver B. Duckett	17 Jul 1923
Gilbert L. Baldwin	3 Feb 1925
Grover C. Clark	30 Mar 1928
Discontinued	15 Mar 1929
Mail to Leicester	



Type 1  
27 mm Black  
24 Mar 1900



Type 2  
28.5 mm Black  
Doane Type 2-?  
18 Jan 1913

## BUNCOMBE COUNTY

### Gem (Cont.)

(Buncombe)

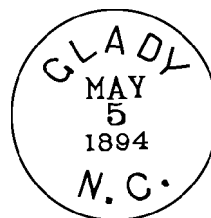


Type 3  
 23 mm Black  
 1910 Type B 4-Bar  
 1 May 1915  
 23 Nov 1916

### Glady

(Buncombe)

Enoch J. Morgan	22 Oct 1883
Atley Long	23 Sep 1884
William A. Long	7 Oct 1884
Jeptha I. Miller	2 Jan 1885
Dallas B. Jemison	29 Oct 1888
Clinton W. Howell	24 Jan 1889
Jeptha I. Miller	17 Sep 1897
Gay H. Miller	30 Nov 1901
Discontinued	14 Oct 1905
Mail to Candler	



Type 1  
 27.5 mm Black  
 5 May 1894  
 24 Jul 1900

### Glenco, Glencoe, Glen Coe

(Buncombe)

Lucretia I. Case	8 Dec 1873
Discontinued	15 Apr 1875
Lucretia I. Case	23 Jul 1875
Samuel Brooks	15 Sep 1875
Name spelled <b>Glen Coe</b> in ledger	1877
William Creasman	31 Jul 1879
Discontinued	25 Feb 1880
Susan E. Hatch	7 May 1880
Samuel Brooks	30 Sep 1881
Name changed to Brooks	6 Feb 1882
Re-established as <b>Glencoe</b>	10 Feb 1882
Lewis M. Hatch	10 Feb 1882
Discontinued	9 May 1882
Re-established as <b>Glenco</b>	8 Mar 1905
Eunice Hall	8 Mar 1905
Discontinued	15 Sep 1909

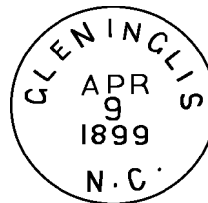
Type 1  
 28 mm Black  
 Doane Type 2-3  
 18 Apr 1908

## BUNCOMBE COUNTY

### Glen Inglis, name changed from Longs

(Buncombe)

William L. Kimmell	28 Oct 1890
Discontinued	27 Jul 1895
Lewis E. Padgett	17 Jul 1896
Joseph F. Rice	1 Apr 1899
James S. Watkins	30 Nov 1901
Alexander M. Goldsmith	6 Dec 1904
Victor G. Sorrells	29 Jan 1907
Changed to <b>Azalea</b>	29 Nov 1909



Type 1  
27.5 mm Black  
14 Aug 1898  
9 Apr 1899



Type 2  
28 mm Black  
Doane Type 1-1  
22 Aug 1905  
3 Dec 1908

### Grace

(Buncombe)

Charles B. Way	9 Nov 1889
John Masters	21 Dec 1897
Discontinued	28 Feb 1902
Mail to Asheville	



Type 1  
27 mm Black  
30 Nov 1890  
15 Jul 1901

### Grantville

(Buncombe)

Alexander L. Logan	13 Sep 1871
Discontinued	25 Apr 1877
Kitty D. Deaver	24 May 1877
Margaret A. Buckner	26 Jun 1877
Nargaret A. Logan	12 Oct 1877
William E. Logan	30 Aug 1881
Joshua C. Fitzgerald	11 Oct 1886
James O. McElroy	15 Jul 1889
E. Franklin Buckner	26 Mar 1890
Squire O. Deaver	22 Jul 1892
Alexander L. Logan	25 May 1894
Eugene R. Phillips	23 May 1898
John S. Ledford	14 Jun 1899
Cyntha A. Fitzgerald	12 Aug 1901
Cora L. Hollowell	15 Apr 1905
Discontinued	15 Nov 1906
Mail to Jupiter	

## BUNCOMBE COUNTY

### Gray Eagle

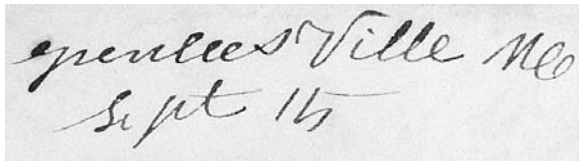
(Buncombe)

Martha E. Kerlee	8 Mar 1870
Franklin A. Sumner	22 Jan 1874
Silas F. Daugherty	19 May 1875
Changed to <b>Black Mountain</b>	27 Jan 1880

### Greenleesville

(Buncombe)

James Greenlee	7 Dec 1827
Joseph Shepherd	26 Mar 1831
To Yancy County	in 1833



Greenleesville Meo  
Sept 15

Manuscript  
15 Sep 1833

### Green River

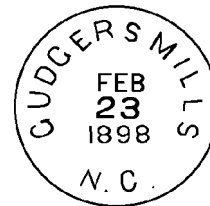
(Buncombe)

Robert Murray	15 Jun 1818
Discontinued	May 1824

### Gudger's Mills

(Buncombe)

Alexander J. Merrill	19 Apr 1888
Discontinued	15 Sep 1906
Mail to Leicester	



Type 1  
27 mm Black  
23 Feb 1898

## BUNCOMBE COUNTY

### Haddon's

(Buncombe)

David Haddon                      7 Mar 1816  
Discontinued                      ca. 1819

### Harkins

(Buncombe)

Thomas J. Harkins                30 Jan 1883  
Joseph M. Hawkins              22 Oct 1886  
Name changed to **Acton**        19 Dec 1887

### Hazel

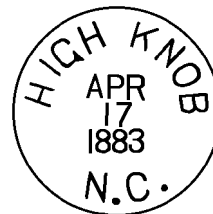
(Buncombe)

Louis F. Siggelkow                24 Aug 1885  
Name changed to **West Asheville**    17 Jul 1889

### High Knob

(Buncombe)

Marietta E. Hawkins              15 Oct 1879  
Robert Teague                    18 Mar 1887  
Discontinued                      27 Nov 1891  
Papers to Trail Branch



Type 1  
27 mm Black  
17 Apr 1883

## BUNCOMBE COUNTY

### Hiram

(Buncombe)

Julius Hayes                      23 Jul 1892  
 Discontinued                    20 Jun 1895  
 No papers

### Homerville, name changed from Flat Creek

(Buncombe)

Rosa L. Smith                    27 Aug 1903  
 Silas W. Lewellyn              14 Nov 1906  
 Discontinued                    29 Jun 1907  
 Mail to Weaverville

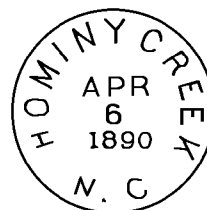


Type 1  
 28 mm Black  
 Doane Type 2-?  
 12 Mar 1907

### Hominy Creek, Hominy

(Buncombe)

Jasper N. Hyatt                    4 Oct 1875  
 Thomas J. Harkins              15 Jan 1877  
 Discontinued                    19 Jul 1877  
 Jasper N. Hyatt                    3 Aug 1877  
 John M. Thrash                  28 Feb 1879  
 Isaac P. Robison                8 Apr 1886  
 Isaac B. Roberson              21 Apr 1886  
 Russell L. Luther                26 Sep 1887  
 Ida S. Gaston                    14 Aug 1889  
 Alexander L. Dryman            19 Jul 1897  
 Name changed to **Hominy**    27 May 1903  
 Discontinued                    30 Jun 1906  
 Mail to Candler



Type 1  
 28.5 mm Black  
 6 Apr 1890



Type 2  
 27 mm Black  
 21 Jun 1897



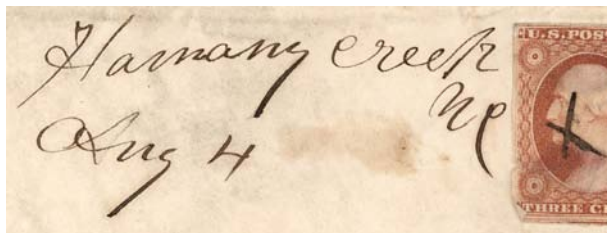
Type 3  
 29 mm Black  
 6 Apr 1900

## BUNCOMBE COUNTY

### Hommeny Creek

(Buncombe)

E. K. Hutsell	6 Apr 1848
Mary A. Hutsell	13 Dec 1852
Joshua Curtis	4 Aug 1853
Burton Cathey	7 Jul 1857
James M. Cathey	15 Jan 1861
Burton Cathey, CSA	1 Jun 1861
J. N. Hyatt, CSA	31 Aug 1861
CSA office closed on or before	30 Apr 1865
Louisa Reid	23 Jan 1866
Rachael E. Candler	21 Mar 1867
Mrs. W. G. Candler	19 Mar 1868
Hannah Jamison	27 Jul 1868
Sarah A. Penland	31 Aug 1868
Name changed to <b>Laurel Fork</b>	29 Feb 1872



Manuscript  
4 Aug 185x

*Hominy Creek N.C.  
Feb. 26 185x*

Manuscript  
26 Feb 185x

### Inanda, name changed from Vernon

(Buncombe)

Elbert J. Rhoads	11 Mar 1891
Sarah L. Mitchell	4 Dec 1891
Appointment rescinded	26 Dec 1891
George W. Ballard	28 Oct 1898
Joel D. Drake	19 Feb 1902
Ella J. Drake	29 Jun 1904
Discontinued	14 Sep 1904
Mail to Biltmore	



Type 1  
27 mm Blue  
11 May 1892  
27 Jul 1892

*Inanda N.C. 10th 27 1892*

Manuscript  
27 Jul 1898

### Ivy

(Buncombe)

Abner Jervis	18 Dec 1827
Daniel Carter	17 Feb 1830
To Yancey County	in 1833

*Ivy N.C. Feb. 16)*

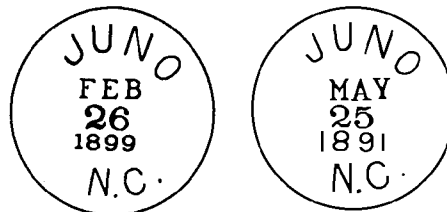
Manuscript  
16 Feb 1831

## BUNCOMBE COUNTY

### Juno

(Buncombe)

William B. Smith	8 Jan 1886
Benjamin P. Smith	12 Sep 1890
William B. Smith	22 Dec 1891
Thomas M. Rymer	12 Dec 1892
Charles L. Sluder	14 Aug 1893
Thomas M. Rymer	2 Aug 1894
Filetus R. Brown	27 Jun 1901
L. L. Brookshire	15 Jan 1902
Thomas M. Rymer	8 Mar 1902
Franklin M. Foster	7 Dec 1904
Discontinued	31 Apr 1907
Mail to Asheville	



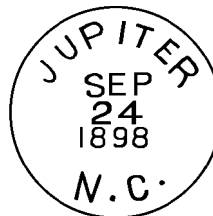
Type 1  
27 mm Black  
25 May 1891  
26 Feb 1899

*The 1891 and 1899 Juno cds are the same with the exception of the year date slug*

### Jupiter

(Buncombe)

North B. McLean	10 Jul 1885
Wiley C. Hunter	2 May 1889
Charlie E. Roberts	26 Apr 1893
Gabrel V. Pickens	30 Mar 1898
Wiley C. Hunter	14 May 1901
William R. Tillery	1 Jul 1909
Discontinued	31 Dec 1909



Type 1  
27.5 mm Black  
24 Sep 1898  
6 May 1902



Type 2  
28 mm Black  
Doane Type 2-2  
30 Mar 1908  
22 Apr 1909

### Jupiter Keys

(Buncombe)

Anna L. Gladwell	7 Jun 1877
Name changed to <b>Cooper's</b>	30 Jan 1880

### Lang's, see Long's

(Buncombe)

## BUNCOMBE COUNTY

### Lapland

(Buncombe)

David Vance	13 Jan 1836
Joseph M. Rice	30 Jan 1844
Adolphus E. Baird	29 Jan 1847
to Madison County	27 Jan 1851

Manuscript  
23 Jan 1840  
2 Oct 1849

### Laural Fork, name changed from Hommeny Creek

(Buncombe)

Hannah J. Jamison	29 Feb 1872
Lawrence P. Henry	23 Jan 1873
William W. Candler	23 Feb 1875
Lourena P. Henry	31 Mar 1876
Discontinued	19 Feb 1877

### Leicester, name changed from Turkey Creek

(Buncombe)

Henry W. Williams	10 Jun 1859
H. W. Williams, CSA	31 Jul 1861
CSA office closed on or before	30 Apr 1865
John Carpenter	17 Apr 1866
Theodore Erwin	31 Jul 1876
Frank F. Brown	31 Aug 1876
Gaston M. Sluder	20 Oct 1885
Robert T. Poore	10 Apr 1889
William E. Merrell	27 Oct 1891
William H. Henderson	11 Jul 1892
R. D. Fillmore Roberson	15 May 1893
Henry L. Merrell	21 Aug 1897
Merritt E. Hayes	14 Feb 1900
William T. Erwin	4 Dec 1902
Altha E. Sluder	6 Jul 1905
Sam M. Mears	6 May 1914
Herman A. Merrell	21 Oct 1922
Marion H. Current, Acting	13 Aug 1934
Marion H. Current	15 Mar 1935
Mrs. Paron J. Clance, Acting	31 Oct 1956
Norman O. Randall, Acting	18 Jul 1958
Margaret S. Chastain, Acting	12 May 1961
William L. Hall, Acting	19 Jul 1963
William L. Hall	30 Sep 1963
Daniel H. Gaddy Jr.	23 Nov 1985
Riley M. Brown Jr. Officer-In-Charge	30 Sep 1992
Nelson A. Higgins	20 Mar 1993
Lynne R. Worley Officer-In-Charge	16 Jan 2003

Manuscript  
17 Dec 1866



Type 1  
32.5 mm Black  
27 Aug 186x



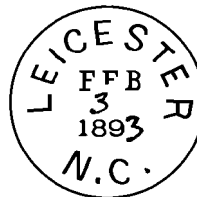
Type 2  
26 mm Black  
11 Mar 1890

# BUNCOMBE COUNTY

## Leicester (Cont.)

(Buncombe)

Sandra L. Riddle Officer-In-Charge 6 Aug 2003  
Kenneth E. Howard 10 Jan 2004  
John F. Braniecki Officer-In-Charge 29 Sep 2008  
John F. Braniecki 29 Aug 2009  
Paul D. Maness 5 Apr 2014



Type 3  
26.5 mm Black  
3 Feb 1893



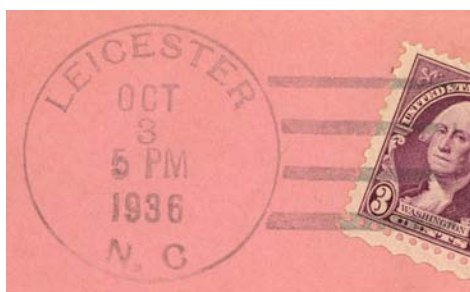
Type 4  
28 mm Black  
12 Mar 1898  
7 Apr 1900



Type 5  
31 mm Black  
Doane Type 3-3  
7 Apr 1907  
10 Jun 1913



Type 6  
32 mm Black  
1910 Type B 4-Bar  
13 Nov 1913  
8 Feb 1917

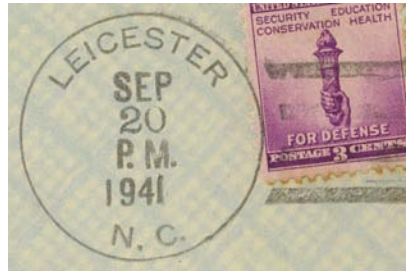


Type 7  
33 mm Black  
1931 Type C/2 4-Bar  
3 Oct 1936  
26 Jan 1944

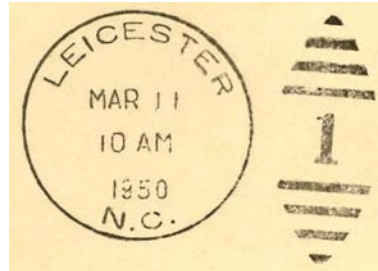
# BUNCOMBE COUNTY

Leicester (Cont.)

(Buncombe)



Type 8  
32 mm Black  
1936 Type F/1 4-Bar  
20 Sep 1941  
26 Jan 1944



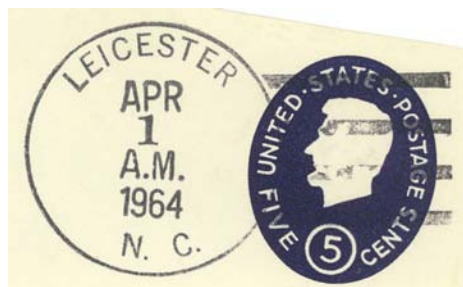
Type 9  
30 mm Black  
Metal Duplex Type ?  
11 Mar 1950  
21 Aug 1954



Type 10  
34 mm Black  
1936 Type F/1 4-Bar  
13 Feb 1953



Type 11  
33.5 mm Black  
1936 Type F/1 4-Bar  
31 Mar 1960  
4 Feb 1961

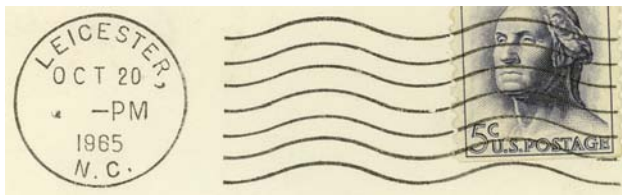


Type 12  
33.5 mm Black  
1936 Type F/1 4-Bar  
1 Apr 1964  
21 Apr 1964

# BUNCOMBE COUNTY

Leicester (Cont.)

(Buncombe)



Type 13  
22.5 mm Black  
International Machine  
Type AT/S 2721  
8 May 1964  
20 Oct 1965



Type 14  
22.5 mm Black  
International Machine  
Type ATS/z 2721 (28748)  
20 Dec 1966  
18 Sep 1981



Type 15  
33 mm Black  
1963 Type F/2 4-Bar (28748)  
29 Sep 1970



Type 16  
28 mm Magenta  
11 Sep 1974



Type 17  
33 mm Black  
1963 Type F/2 4-Bar (28748)  
1 May 1975

# BUNCOMBE COUNTY

Leicester (Cont.)

(Buncombe)



Type 18  
29 mm Red  
Self-Inking Postmarker  
(28748)  
19 Mar 1997

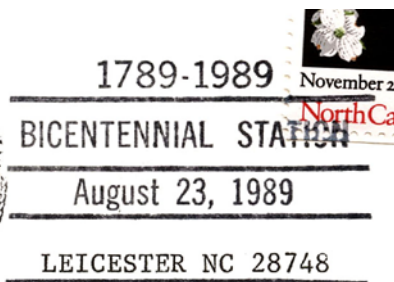


Type 19  
34.5 mm Black  
Self-Inking Postmarker (28748)  
19 Mar 1997  
26 Jun 1999



Type 20  
35.5 mm Black  
Self-Inking Postmarker (28748)  
22 Dec 2006

Temporary Station Cancels  
Bicentennial Station



Type 1  
86 x 37 mm Black  
(28748)  
Post office name typed in  
23 Aug 1989

## BUNCOMBE COUNTY

### Limestone (1)

(Buncombe)

William Murray	6 Mar 1827
Jesse Whitaker	2 Mar 1831
John Spann	28 Jul 1835
John N. Murray	28 Mar 1837
Jacob R. Shuford	17 Oct 1837
Changed to Shufordsville	19 Oct 1852

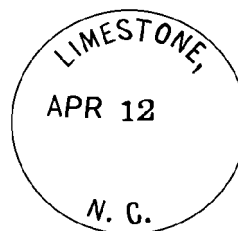
*Limestone N.C.*

Manuscript  
14 Nov 1828  
18 Feb 185x

### Limestone (2)

(Buncombe)

Leah M. Garren	24 Sep 1887
Nancy E. Carter	3 Nov 1891
Mary S. Garren	24 Jun 1896
Ellen S. Stroup	14 May 1901
Discontinued	28 Feb 1903
Papers to Fletcher, Henderson County	



Type 1  
31 mm Black  
12 Apr 189x

### Little River

(Buncombe)

Epaphroditus Hightower	19 Apr 1813
Discontinued	ca 1823

### Lockarts, name changed from Morgans Hill

(Buncombe)

Anderson Lockart	3 Feb 1874
Discontinued	4 Dec 1874

## BUNCOMBE COUNTY

### Longs

(Buncombe)

Nathaniel Atkinson	4 Jun 1880
William Roberson	16 Oct 1880
William Carver	13 Sep 1881
Annie Colvin	9 May 1882
Alexander Colvin	10 Jul 1882
Name changed to <b>Glen Inglis</b>	28 Oct 1890

### Luther

(Buncombe)

Solomon J. Luther	10 Dec 1887
George Young	19 Nov 1889
Appointment rescinded	1 Feb 1893
Solomon J Luther continued	1 Feb 1893
Discontinued	15 Jun 1901
Ernest H. Powell	6 Jan 1904
Discontinued	15 Dec 1905
Mail to Candler	



Type 1  
28 mm Black  
20 Nov 1891  
10 Nov 1893

### Malatt

(Buncombe)

Anderson C. Cole	11 Dec 1901
Discontinued	14 Sep 1907
Mail to Weaverville	

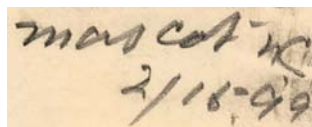
### Mascot

(Buncombe)

Lena L. Wells	3 Nov 1889
Joseph S. Wells	26 Jan 1894
James M. Rogers	24 Feb 1902
Appointment rescinded	28 Feb 1902
Joseph S. Wells continued	28 Feb 1902
Discontinued	31 May 1913
Mail to Leicester	



Type 1  
27 mm Black  
4 Dec 1891



Manuscript  
15 Feb 1899

## BUNCOMBE COUNTY

### Meganna

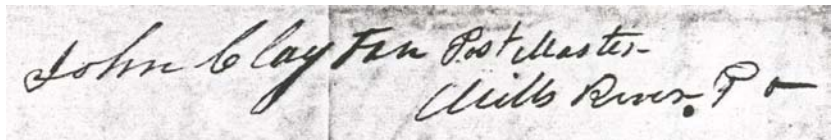
(Buncombe)

Millard G. Jones            4 Jun 1892  
Joshua R. Jones            2 Jun 1894  
Discontinued              21 Apr 1898  
Mail to Hominy Creek

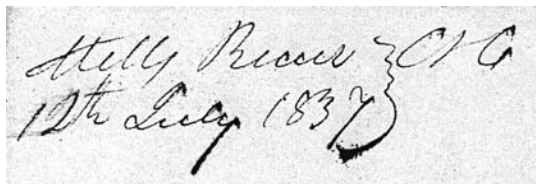
### Mills River

(Buncombe)

Philip Brittain            20 May 1826  
John Clayton              12 Feb 1828  
James Brittain            28 Nov 1836  
To Henderson County      in 1838



Postmaster frank  
3 Feb 1832



Manuscript  
3 Feb 1832  
12 Oct 1837

### Mitchell

(Buncombe)

Elizabeth R. Patton        22 Jun 1880  
Edwin S. Patton            8 Oct 1883  
Discontinued              1 Feb 1889  
William H. Burnett        12 Jun 1889  
Discontinued              13 Jul 1889  
Francis M. Stevens        16 Nov 1889  
Discontinued              8 Oct 1890  
Mail to Black Mountain  
J. C. Williams              9 Mar 1891  
Discontinued              10 Jul 1891  
No papers

## BUNCOMBE COUNTY

### Montreat

(Buncombe)

Francis Dwight Rood	8 Dec 1898
Elmer D. Lansing	1 Apr 1907
Charles P. Johnson	22 Jun 1914
Albert R. Bauman	16 Mar 1917
Chester C. Lord	8 Jun 1922
Elmer D. Lansing	1 Jun 1932
Jarnagin C. Rice	8 Jun 1936
Francis O. Wily, Acting	31 Jul 1951
Ruth E. Merrick, Acting	31 Dec 1951
Margaret E. Smith, Acting	31 Jul 1955
Ada S. Solomon, Acting	31 Aug 1955
Ada S. Solomon	16 Jul 1958
David Wyatt Officer-In-Charge	23 Mar 1979
Mrs. Katherine H. Davis	15 Dec 1979
Marie H. Freeman Officer-In-Charge	22 Dec 2004
Jarrett H. Washburn	22 Jan 2005
Catherine L. Curtis Officer-In-Charge	28 Jun 2007
Catherine L. Curtis	5 Jan 2008



Type 1  
27 mm Black  
19 Sep 1900

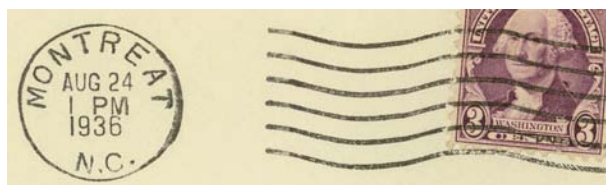


Type 2  
30 mm Black  
1906 Type A/1 4-Bar  
24 Jun 1907  
17 Aug 1909



Type 3  
30 mm Black  
Metal Duplex Type H2  
30 Aug 1916

Type 4  
23 mm Black  
Columbia Machine  
Type G 2W  
21 Jul 1919



Type 5  
20.5 mm Black  
Universal Machine  
Type DT 600  
24 Aug 1936  
8 Nov 1951

BUNCOMBE COUNTY

Montreat (Cont.)

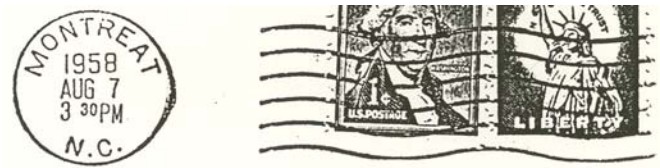
(Buncombe)



Type 6  
29 mm Black  
19 Jul 1947



Type 7  
20.5 mm Black  
Universal Machine  
Type DT 600  
20 Mar 1953  
21 Feb 1956



Type 8  
20.5 mm Black  
Universal Machine  
Type DT 300  
7 Aug 1958



Type 9  
29 mm Magenta  
6 Jul 1959  
14 Aug 1964



Type 10  
21 mm Black  
Universal Machine  
Type DT 400  
(Pray For Peace)  
11 Dec 1959  
18 Aug 1964

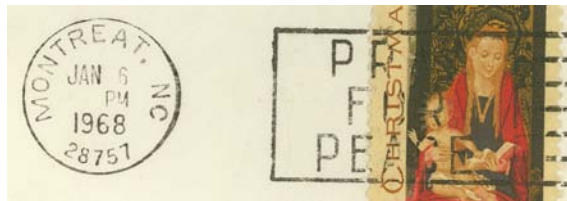


Type 11  
27 mm Black  
Metal Duplex Type E2  
23 Aug 1963

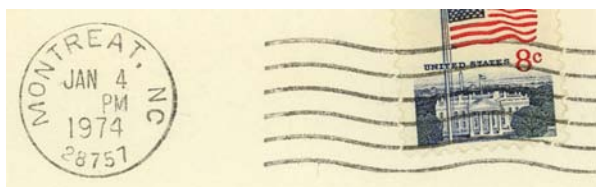
# BUNCOMBE COUNTY

Montreat (Cont.)

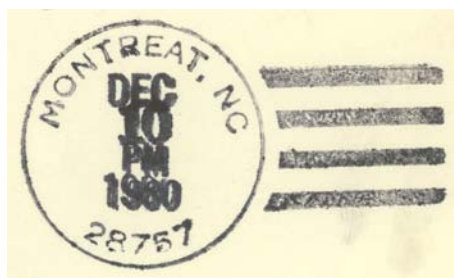
(Buncombe)



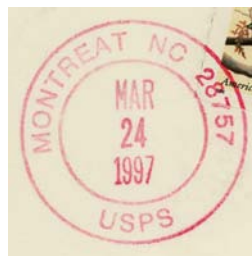
Type 12  
20.5 mm Black  
Universal Machine  
Type DTSz 400 (28757)  
(Pray For Peace)  
19 Oct 1965  
7 Dec 1972



Type 13  
20.5 mm Black  
Universal Machine  
Type DTSz 300 (28757)  
4 Jan 1974  
9 Jan 1979



Type 14  
32 mm Black  
1963 Type F/2 4-Bar (28757)  
10 Dec 1980  
3 Aug 1988



Type 15  
29.5 mm Red  
Self-Inking Postmarker (28757)  
24 Mar 1997



Type 16  
30 mm Black  
Self-Inking Postmarker (28757)  
5 Jan 2007

BUNCOMBE COUNTY

Montreat (Cont.)

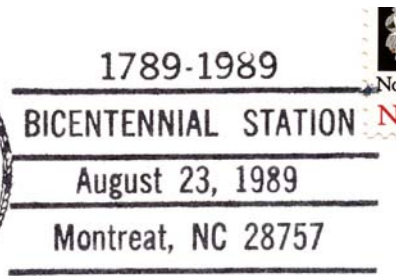
(Buncombe)



Type 17  
34.5 mm Black  
Self-Inking Postmarker (28757)  
5 Jan 2007

Temporary Station Cancels

Bicentennial Station



Type 1  
86 x 37.5 mm Black  
(28757)  
23 Aug 1989

Parcel Post



Type 1  
30.5 mm Black  
16 Jan 1937



Type 2  
29.5 mm Black  
7 Jul 1944

## BUNCOMBE COUNTY

### Morgan Hill

(Buncombe)

James H. Sams	27 Jan 1875
Francis M. Stockton	25 Oct 1876
F. M. Williams	5 Mar 1894
Name change to <b>Morganhill</b>	5 Mar 1894
Name change & appt. rescinded	18 Sep 1894
Francis M. Stockton continued	18 Sep 1894
Zebulon B. Hopson	7 Jul 1897
John J. Ammons	25 Jan 1900
William T. Bradley	16 Mar 1901
Reuben P. Lewellen	15 Oct 1901
John N. Bradley	18 Sep 1906
James N. Morgan	1 Nov 1907
Discontinued	15 Jul 1908
Papers to Jupiter	



Type 1  
28 mm Black  
28 Jan 1905

### Morgans Hill

(Buncombe)

Anderson Lockart	12 Jan 1874
Name changed to <b>Lockarts</b>	3 Feb 1874

### Mount Mitchell

(Buncombe)

Archibald A. Tyson	13 Aug 1895
Discontinued	16 Feb 1897
Papers to Black Mountain	

*This post office serviced a logging camp from a logging train car.*

### Mud Creek, name changed from Shady Grove

(Buncombe)

Benjamin Richardson	6 Mar 1838
To Henderson County	in 1838

## BUNCOMBE COUNTY

### Murraysville

(Buncombe)

Samuel Murray, Jr.	12 Mar 1806
William Murray	24 Jul 1812
Daniel Blake	6 Mar 1827
Discontinued	ca. 1827

### Newfound, New Found

(Buncombe)

Benjamin H. Allen	1 Mar 1825
Discontinued	ca. 1827
Re-established as <b>New Found</b>	11 Dec 1876
Samuel C. Wright	11 Dec 1876
Laura L. Green	26 Oct 1881
Mary C. Cole	13 Sep 1887
Levi Plemmons	28 Jan 1888
James B. Seigler	13 May 1901
Emily M. Hall	18 Jul 1906
Manson D. Shook	28 Mar 1907
Discontinued	13 Mar 1911
Mail to Leicester	



Type 1  
27 mm Black  
4 Sep 1891

### Octo

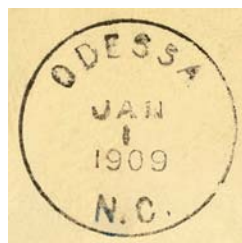
(Buncombe)

John E. Triplett	11 Apr 1906
Establishment order rescinded	8 Sep 1906

### Odessa

(Buncombe)

Riley W. King	3 Jun 1903
Jesse H. Ball	3 Jan 1910
Discontinued	15 Mar 1929
Mail to Leicester	



Type 1  
29 mm Black  
1 Jan 1909

## BUNCOMBE COUNTY

### Oteen

(Buncombe)

Sallie L. Whitsen	5 Oct 1918
Raphael M. Rice, Acting	1 May 1925
Raphael M. Rice	17 Dec 1925
Clarence A. Pennington, Acting	10 Sep 1934
Clarence A. Pennington	16 Jan 1935
Discontinued	30 Nov 1950

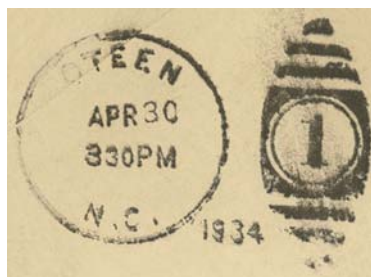
Became a station of Asheville



Type 1  
32 mm Black  
1910 Type B 4-Bar  
1 Sep 1919



Type 2  
26 mm Black  
Metal Duplex Type E2  
20 Mar 1925  
26 Jul 1925



Type 3  
27.5 mm Black  
Metal Duplex Type E2  
30 Apr 1934



Type 4  
20.5 mm Black  
Universal Machine  
Type DT 600  
29 Jan 1929  
18 Feb 1948

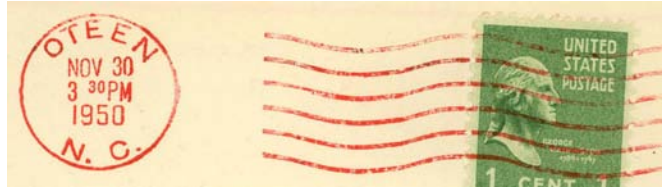


Type 5  
30 mm Black  
Metal Duplex Type E2  
23 May 1940  
30 May 1950

BUNCOMBE COUNTY

Oteen (Cont.)

(Buncombe)

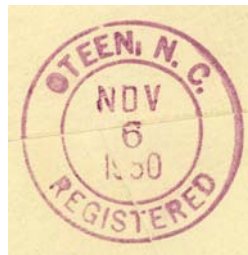


Type 6  
20.5 mm Red  
Universal Machine  
Type DT 600  
30 Nov 1950

Registered



Type 1  
29 mm Magenta  
19 Dec 1941



Type 2  
29 mm Magenta  
6 Nov 1950

Parcel Post



Type 1  
29 mm Black  
3 Jan 1942

M.O.B.  
(Money Order Business)



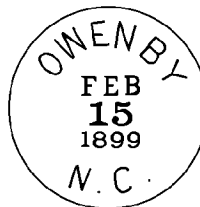
Type 1  
28 mm Magenta  
17 Mar 1922

## BUNCOMBE COUNTY

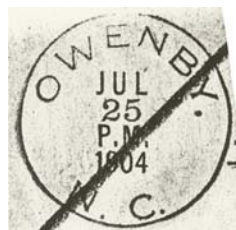
### Owenby

(Buncombe)

William N. Owenbey      29 Jul 1885  
William F. Rogers      7 Nov 1896  
Discontinued            31 Aug 1904  
Mail to Asheville



Type 1  
26.5 mm Black  
15 Feb 1899



Type 2  
29 mm Black  
Doane Type 1-?  
25 Jul 1904

### Pinnacle

(Buncombe)

Franklin Griggs            16 Jun 1885  
Thomas W. Stephens      23 Aug 1887  
Noah H. Melton          13 Feb 1889  
Name changed to **Alora**    2 Apr 1900

### Proviso

(Buncombe)

Reuben F. Lee            23 Jul 1886  
Henry West               14 Feb 1889  
Andrew H. Robeson      21 May 1889  
Hurley R. Rogers        1 Jul 1895  
Discontinued            25 Jul 1898  
Mail to Leicester

## BUNCOMBE COUNTY

### Ramoth

(Buncombe)

Alice C. Ray 27 Nov 1888  
Discontinued 31 Aug 1893  
Mail to Asheville

### Ramsey

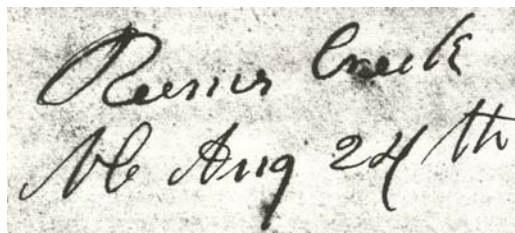
(Buncombe)

Albert W. Ramsey 6 Mar 1882  
Albert G. Ramsey 27 Mar 1882  
James G. McElroy 8 Oct 1883  
Discontinued 6 Feb 1884  
James W. Plemmons 6 Mar 1884  
Edward Sams 31 Jul 1884  
James W. Plemmons 12 Aug 1884  
J. B. Gausnel 6 Oct 1884  
Discontinued 11 Nov 1884  
Papers to Asheville

### Reem's Creek

(Buncombe)

John B. Weaver 19 Jul 1850  
Ezekiel H. McCluir 3 Oct 1857  
E. H. McCluire, CSA 1 Jun 1861  
Tabitha P. McCluire, CSA 6 Jul 1861  
CSA office closed on or before 30 Apr 1865  
Mrs. T. P. McCluire 24 Aug 1865  
Mary E. McClure 3 Nov 1865  
Eliza J. McClure 5 Aug 1868  
Name changed to **Weaverville** 12 Dec 1873



Manuscript  
24 Aug 1858

### Refuge

(Buncombe)

William B. Smith 14 Mar 1882  
Philip Hunter 11 Apr 1882  
Discontinued 6 Jun 1884  
Alfred P. Reece 5 Sep 1884  
Discontinued 3 Nov 1885  
Papers to Jupiter

## BUNCOMBE COUNTY

### Resthaven

(Buncombe)

Thomas J. Brookshire      1 Feb 1892  
 Discontinued              14 May 1904  
 Mail to Biltmore

### Riceville

(Buncombe)

E. F. Clark                      28 Aug 1876  
 Alfred L. Stevenson        19 Feb 1877  
 Joseph C. Clark              15 Jul 1889  
 Order rescinded              9 Oct 1890  
 Miss Donnie Clark         12 Sep 1890  
 Order rescinded              9 Oct 1890  
 A. L. Stevenson continued   9 Oct 1890  
 Nannie E. Clark              20 Dec 1897  
 Discontinued                31 Mar 1906  
 Mail to Asheville



Type 1  
 28 mm Black  
 19 Jan 1900

### Ridgecrest, name changed from Bluemont

(Buncombe)

Stanley B. Moore              13 Jan 1912  
 George H. Holman            13 Mar 1919  
 Paul Harris, Acting         5 Apr 1928  
 Helen E. Harris               26 Jul 1928  
 Mrs. Pinckney R. Holman. Act.   19 Jul 1935  
 Mrs. Pinckney R. Holman      11 Feb 1936  
 Helen E. Harris, Acting       20 Apr 1956  
 William L. Snypes            30 Jun 1959  
 Marie T. Turner Officer-In-Charge   6 Apr 1979  
 Marie T. Padgham (marriage)   21 Apr 1979  
 Gail A. Biddix Officer-In-Charge   2 Nov 2006  
 Charles E. Goree              14 Apr 2007  
 Converted to Remotely Managed  
 post office of Black Mountain      4 May 2013



Type 1  
 31.5 mm Black  
 1910 Type B 4-Bar  
 26 Sep 1921



Type 2  
 31 mm Black  
 1930 Type E 4-Bar  
 20 Jun 1930  
 29 Jun 1932

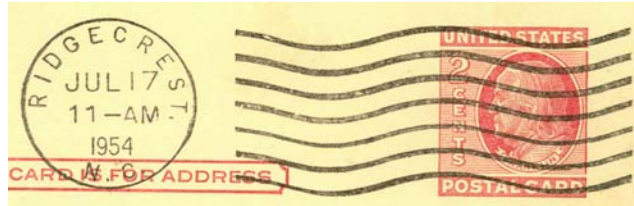
# BUNCOMBE COUNTY

## Ridgecrest (Cont.)

(Buncombe)



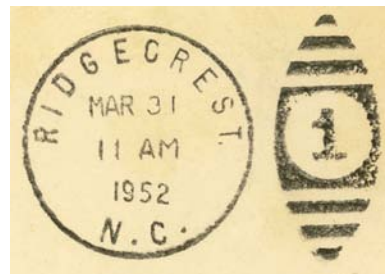
Type 3  
33 mm Black  
1931 Type C/2 4-Bar  
23 Sep 1936



Type 4  
22 mm Black  
International Machine  
Type AT/s 2711  
13 Aug 1937  
31 Aug 1956



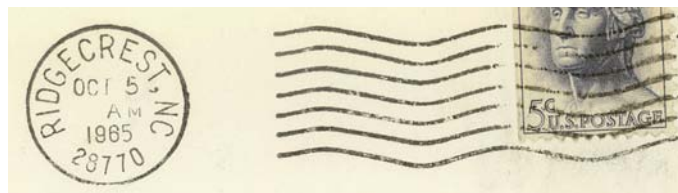
Type 5  
30.5 mm Black  
Metal Duplex Type ?  
1 Aug 1941



Type 6  
32 mm Black  
Metal Duplex Type E2  
1 Oct 1951  
31 Mar 1952



Type 7  
22 mm Black  
International Machine  
Type J30  
7 Jun 1958  
25 Jul 1965



Type 8  
22 mm Black  
International Machine  
Type Hz30 (28770)  
5 Oct 1965  
20 Jul 1982

# BUNCOMBE COUNTY

## Ridgecrest (Cont.)

(Buncombe)



Type 9  
32.5 mm Black  
1963 Type F/2 4-Bar (28770)  
2 Feb 1971  
4 Jun 1973



Type 10  
34.5 mm Black  
Self-Inking Postmarker  
Type 2A (28770)  
15 May 1992  
15 Sep 1997



Type 11  
31.5 mm Red  
Self-Inking Postmarker  
(28770-9998)  
1 May 2007  
29 Jan 2009

## Riverside

(Buncombe)

J. Jones	18 May 1869
Wm. T. Wilson	15 Jun 1869
David Vance	8 Jan 1874
Discontinued	26 Jun 1877

## BUNCOMBE COUNTY

### Rockview

(Buncombe)

Joseph L. Ray	9 Oct 1890
Discontinued	30 Apr 1901
H. Augustus Williams	18 Jul 1901
Christopher C. Wheeler	28 Mar 1908
J. Ellis Burleson	6 Jan 1915
William H. Haynes	4 Mar 1922
J. Ellis Burleson, Acting	31 Mar 1923
J. Ellis Burleson	16 May 1923
Discontinued	30 Nov 1929
Mail to Barnardsville	



Type 1  
32 mm Black  
1910 Type B 4-Bar  
16 Jan 1913



Type 2  
31 mm Black  
1923 Type A/3 4-Bar  
30 Nov 1929

### Sand Hill

(Buncombe)

George W. Cannon	19 Dec 1873
Discontinued	17 Jun 1874

### Sandy Mush

(Buncombe)

John H. Robeson	18 Sep 1843
John Wells	14 Feb 1856
Raffail W. Patty	4 Mar 1858
John Wells, CSA	20 Jan 1862
CSA office closed on or before	30 Apr 1865
John Wells	23 Feb 1866
Lou H. Wells	25 Apr 1866
Charles Green	20 Sep 1869
Discontinued	3 Nov 1870
Peter Ball	3 Feb 1871
John Reeves	28 Dec 1875
William B. Smith	8 Jul 1879
E. P. Ball	9 Oct 1883
Juanna E. Reynolds	22 Oct 1883
John H. Reynolds	20 Jan 1886
William E. Waldrop	18 Oct 1889
John W. Bowling	14 Apr 1893

Sandy Mush

Manuscript  
30 May 1847

Confederate

Manuscript  
7 Nov 1861  
12 Jun 186x

## BUNCOMBE COUNTY

### Sandy Mush (Cont.)

(Buncombe)

Dora Rogers                      2 Jun 1897  
 Robert G. Keener              13 Jul 1904  
 Eleura J. Worley                28 Oct 1913  
 Discontinued                  14 Jan 1922  
 Mail to Odessa



Type 1  
 28 mm Black  
 Doane Type 1-1  
 8 Jan 1909  
 25 Mar 1911

### Shady Grove

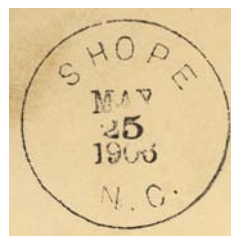
(Buncombe)

Benjamin Richardson        23 Feb 1827  
 Name changed to **Mud Creek**  
 and moved to Henderson County

### Shope

(Buncombe)

Malinda C. Shope              11 Nov 1884  
 Alexander A. Shope          25 Apr 1894  
 John W. Gragg                 5 Nov 1896  
 Baxter S. Tipton              8 Jan 1904  
 Discontinued                  30 Nov 1906  
 Mail to Farm School

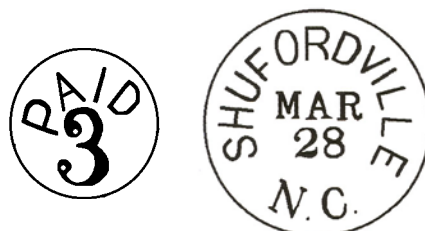


Type 1  
 32 mm Black  
 20 May 1900  
 25 May 1906

### Shufordville, name changed from Limestone

(Buncombe)

Jacob R. Shuford                9 Oct 1852  
 William R. Young              5 Feb 1858  
 Goodson M. Roberts          10 Nov 1858  
 Goodson M. Roberts, CSA     16 Jul 1861  
 James E. Reed, CSA          25 Mar 1862  
 CSA office closed on or before 30 Apr 1865  
 Marcus L. H. Shuford        1 Aug 1866  
 Miss F. E. Livingston        14 Jan 1867  
 Burill P. Shroat                17 Sep 1868  
 Samuel Cunningham         18 Aug 1870  
 E. Pfister                        2 Dec 1872  
 Marcus L. Shuford            12 Sep 1873  
 Samuel L. Cunningham      23 Feb 1874  
 Moved to Henderson County   3 Sep 1877



Confederate

Type 1  
 31 mm Black  
 28 Mar 185x



Manuscript  
 14 Aug 186x  
 3 Dec 1862

BUNCOMBE COUNTY

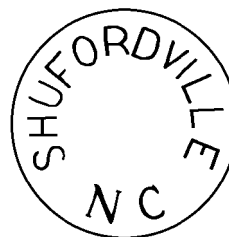
Shufordville (Cont.)

(Buncombe)

*Shufordville N.C.  
Dec 16/67*

Manuscript  
17 Aug 1867  
16 Dec 1867

cds of 1870s used  
with ms dates



Type 1 var.  
(No date)  
31 mm Black



Type 2  
24.5 mm Black  
(Note spelling "Shufordville")  
22 May 1872  
28 Apr 187x

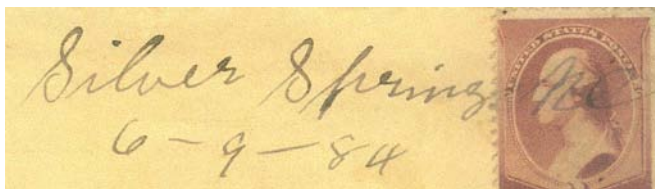


Type 2 var.  
24.5 mm Black  
Also with blank center (no  
date)  
22 Nov 1874

Silver Springs

(Buncombe)

Thomas W. Postell	6 Oct 1881
John B. Cole	12 Jan 1883
Thomas C. Collins	11 Jul 1883
James L. Henry	12 Jun 1884
Miss Bell E. Henry	22 Oct 1884
Daniel Pyne	11 Nov 1884
Albert A. Banks	24 Apr 1885
Discontinued Papers to Ashville	16 Jun 1885



Manuscript  
9 Jun 1884

# BUNCOMBE COUNTY

## Skyland

(Buncombe)

O. P. Reid	16 Apr 1889
Otis A. Miller	26 Apr 1889
Arthur B. Case	31 Aug 1893
Wesley W. Long	4 Aug 1897
David M. Sumner	8 Aug 1901
James F. Ducker	10 Jun 1907
Arther B. Case	17 Jun 1914
Alley B. Lance, Acting	23 Jul 1937
George W. Morgan	4 Dec 1937
Wesley G. Cromer, Acting	1 Jul 1946
Wesley G. Cromer	2 Jul 1947
Bill Rhea Green, Acting	29 Nov 1968
Bill Rhea Green	17 Jan 1969
Albert Neil Officer-In-Charge	
Douglas Sparks Officer-In-Charge	17 Sep 1986
Tim Marlowe Officer-In-Charge	16 Jan 1987
Pat Carmack Officer-In-Charge	15 May 1987
Alvin McCay Officer-In-Charge	14 Sep 1987
Janice Ketner Officer-In-Charge	12 Jan 1988
Danny L. West Officer-In-Charge	22 Feb 1988
Franklin D. Rollins Officer-In-Charge	3 May 1988
Nancy D. Porter	21 May 1988
Kay G. Foster Officer-In-Charge	6 Dec 1990
Jeffrey Allen McIntosh Officer-In-Charge	4 Jan 1991
Douglas Wayne Duckett Officer-In-Charge	16 Apr 1991
Callie L. Miller	1 Jun 1991
Catherine M. Spica Officer-In-Charge	24 Sep 1998
Stephanie A. Harvill Officer-In-Charge	10 Nov 1998
Catherine M. Spica Officer-In-Charge	23 Feb 1999
Sharon A. Hall Officer-In-Charge	20 Jul 1999
Terri R. Miller	9 Oct 1999
Sharon A. Hall Officer-In-Charge	7 Oct 2008
Elizabeth R. Dalton Officer-In-Charge	8 Sep 2009
David A. Robbins Officer-In-Charge	8 Jan 2010
Liane Brooks Officer-In-Charge	3 Nov 2010
Lori Young Officer-In-Charge	13 Jan 2011
Elizabeth L. Bopp	24 Mar 2012



Type 1  
27.5 mm Black  
1 Aug 1897  
7 Dec 1898



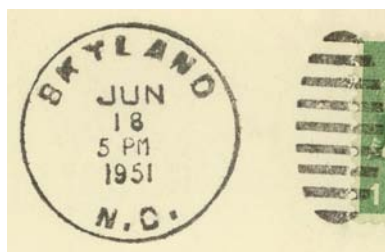
Type 2  
28.5 mm Black  
24 Sep 1903



Type 3  
28.5 mm Black  
Metal Duplex Type H2  
1 Jun 1905



Type 4  
32 mm Black  
1910 Type B 4-Bar  
20 Feb 1913  
2 Jul 1915



Type 5  
28.5 mm Black  
Metal Duplex Type H2  
10 Nov 1928  
8 Nov 1954

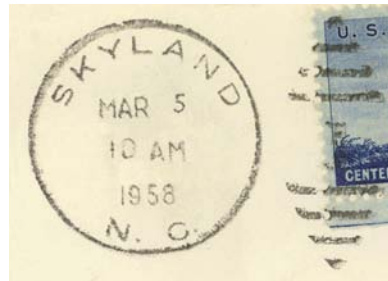
BUNCOMBE COUNTY

Skyland (Cont.)

(Buncombe)



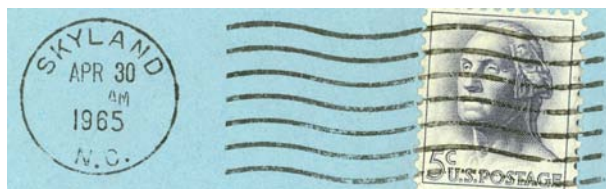
Type 6  
33.5 mm Black  
1931 Type C/2 4-Bar  
7 Aug 1931



Type 7  
30 mm Black  
Metal Duplex Type ?  
5 Mar 1953  
21 Oct 1960



Type 8  
33.5 mm Black  
1936 Type F/1 4-Bar  
1 Feb 1965



Type 9  
20.5 mm Black  
Universal Machine  
Type DT 200  
27 Apr 1965  
1978

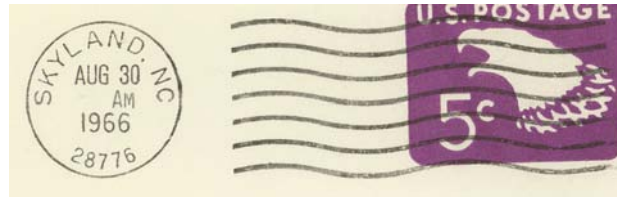


Type 10  
30.5 mm Magenta  
9 Nov 1965

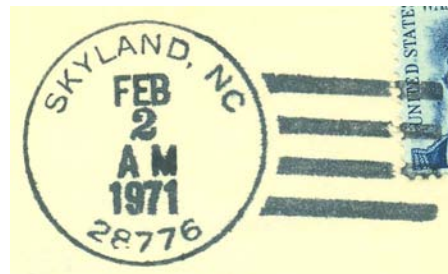
BUNCOMBE COUNTY

Skyland (Cont.)

(Buncombe)



Type 11  
20 mm Black  
Universal Machine  
Type DTSz 200 (28776)  
9 Mar 1965  
2 Dec 1977



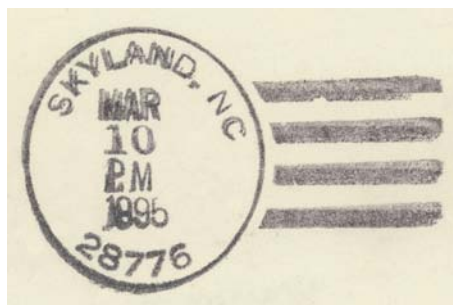
Type 12  
32 mm Black  
1963 Type F/2 4-Bar (28776)  
2 Feb 1971  
31 Dec 1971



Type 13  
33 mm Black  
1963 Type F/2 4-Bar (28776)  
5 Sep 1975



Type 14  
31.5 mm Black  
Self-Inking Postmarker  
Type 2A (28776)  
24 Dec 1984



Type 15  
33.5 mm Black  
1963 Type F/2 4-Bar (28776)  
10 Mar 1995

BUNCOMBE COUNTY

Skyland (Cont.)

(Buncombe)



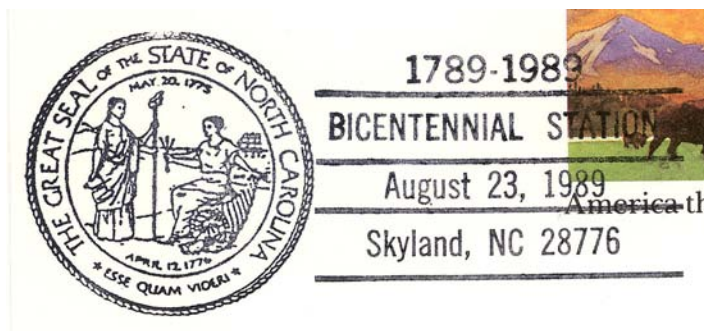
Type 16  
28.5 mm Red  
Self-Inking Postmarker  
(28776)  
22 Mar 1994  
25 Mar 1997



Type 17  
36.5 mm Black  
Self-Inking Postmarker (28776)  
10 Apr 2007

Temporary Station Cancels

Bicentennial Station



Type 1  
87 x 37.5 mm Black  
(28776)  
23 Aug 1989

M.O.B.  
(Money Order Business)



Type 1  
29 mm Magenta  
20 Feb 1941

Third Class Cancels



Type 1  
31 x 5.5 mm Blue  
29 May 1905



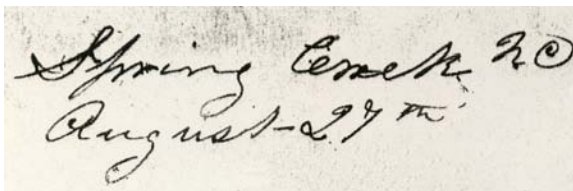
Type 2  
37 x 18 mm Black  
195x

## BUNCOMBE COUNTY

### Spring Creek

(Buncombe)

William Plemmons	16 Nov 1844
Discontinued	16 Oct 1845
W. G. B. Garrett	19 Aug 1847
George C. Askew	15 Nov 1849
To Madison County	27 Jan 1851



Manuscript  
12 Mar 1848  
27 Aug 1848

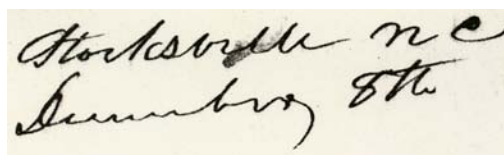
*W. G. B. Garrett Pm  
free*

Postmaster frank  
27 Aug 1848

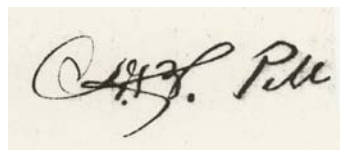
### Stocksville

(Buncombe)

Nehemiah Blackstock	13 Jan 1836
James G. Blackstock	8 Aug 1837
Nehemiah Blackstock	9 Dec 1837
Robert V. Blackstock	16 Jun 1843
N. Blackstock, CSA	6 Jul 1861
CSA office closed on or before	30 Apr 1865
Pleasant Lankford	20 Aug 1866
Adam F. Eller	29 Nov 1869
Henry C. Roberts	3 Aug 1871
<i>Roberts moved to Flat Creek 11 Dec 1878 leaving a vacancy.</i>	
Henry C. Blackstock	24 Feb 1879
Elijah Y. Gentry	11 Sep 1900
John R. Evins	19 Dec 1905
Discontinued	15 Oct 1907
Henry C. Blackstock	31 Mar 1908
Charles C. Lankford	21 Aug 1919
Hester E. Evins	30 Jan 1922
W. Fred Garrison, Acting	15 Oct 1934
W. Fred Garrison	5 Mar 1935
Virginia H. Roberts, Acting	31 Jan 1953
Virginia H. Roberts	5 Aug 1955
Bertie L. Banks, Acting	25 Feb 1957
Discontinued	31 May 1958
Mail to Weaverville	

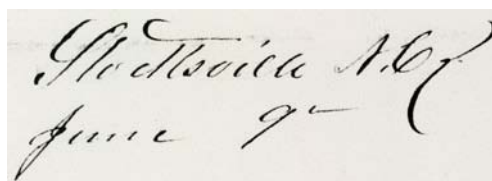


Manuscript  
8 Dec 1837



Postmaster frank  
8 Dec 1837

Confederate



Manuscript  
9 Jun 1862

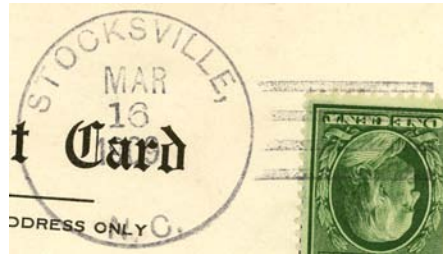


Type 1  
27 mm Black  
31 Oct 1885

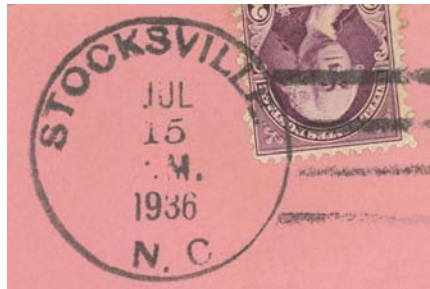
# BUNCOMBE COUNTY

Stockville (Cont.)

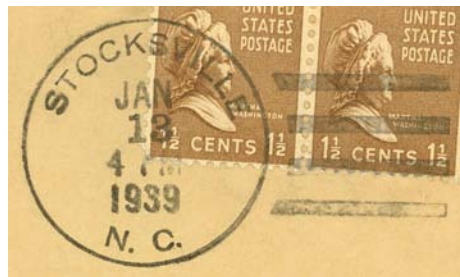
(Buncombe)



Type 2  
31 mm Black  
1906 Type A/1 4-Bar  
16 Mar 1909  
4 Mar 1911



Type 3  
34 mm Black  
1931 Type C/2 4-Bar  
15 Jul 1936



Type 4  
32 mm Black  
1936 Type F/1 4-Bar  
13 Jan 1939  
27 Jan 1941



Type 5  
24.5 mm Black  
International Machine  
Type AT/S 2712  
9 Jan 1950  
30 Sep 1952



Type 6  
32 mm Black  
1936 Type F/1 4-Bar  
31 Aug 1958

## BUNCOMBE COUNTY

### Success

(Buncombe)

James M. McEntire	25 Jan 1888
Discontinued	28 Nov 1889
Frank P. Ingle	29 Mar 1892
Discontinued	2 Jan 1897
Papers to Juno	



Type 1  
27 mm Black  
7 May 1888  
5 May 1895

### Sulphur Springs

(Buncombe)

Reuben Deaver	12 Mar 1832
Discontinued	12 Dec 1832
Reuben Deaver	22 Apr 1833
Discontinued	21 Oct 1852
William L. Henry	9 Jun 1853
Mary Anne Hutsell	13 Nov 1860
William L. Henry, CSA	Bibliog. #19
CSA office closed on or before	30 Apr 1865
Federal office discontinued	11 Dec 1866

*Sulphur Springs N.C.*

Manuscript  
1 Feb 1836  
2 Feb 1851

*Free R. Deaver P.M.*

Postmaster frank  
14 Jun 1839

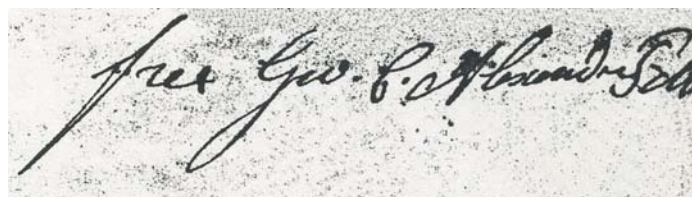
### Swannano, Swannanoa

(Buncombe)

James Whitaker	27 Mar 1818
Moses Whiteside	12 Sep 1818
George C. Alexander	10 Apr 1826
George C. Alexander, CSA	6 Jul 1861
CSA office closed on or before	30 Apr 1865
Calvin Patton	20 Oct 1865
Daniel Wilfong	23 Feb 1866
Elizabeth R. Patton	11 Jun 1866
Discontinued	9 Aug 1869
Mattie Burgin	25 Oct 1869
Mary J. Pickens	10 Jan 1871
James T. Pickens	7 Jul 1873
Name changed to <b>Swannanoa</b>	28 Aug 1876
James T. Pickens	28 Aug 1876
Mattie N. Pickens	17 Mar 1886
Discontinued	2 May 1891
Mail to Glen Inglis	
Emma R. Davidson	14 Jul 1891
William H. Wilson	13 Apr 1893
Edward D. Dewey	18 Dec 1894
Marcus L. Hullett	1 Jun 1897
James H. Davidson	10 Oct 1899
David W. Harrison	22 Mar 1901
Joseph M. Patton	8 Jul 1914
Samuel F. Davidson, Acting	1 Jul 1925
Samuel F. Davidson	17 Dec 1925
Wallace B. Stone, Acting	26 Dec 1933
Wallace B. Stone	12 Feb 1935

*Swannanoa*

Manuscript  
1826  
12 Oct 185x



Postmaster frank  
1832

Confederate

*Swannanoa, N.C.  
Mar 15*

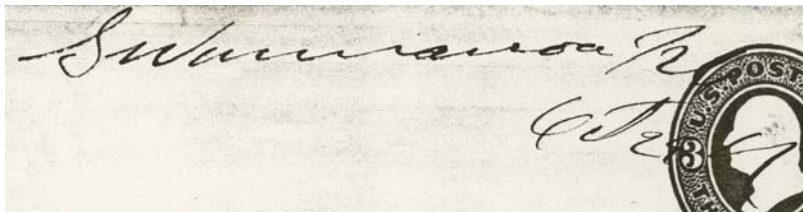
Manuscript  
15 Mar 1864  
31 Mar 1864

# BUNCOMBE COUNTY

## Swannano, Swannanoa (Cont.)

(Buncombe)

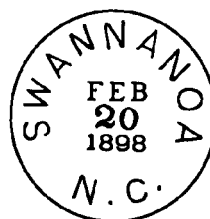
Winnie Gibbs Young, Acting	18 Mar 1942
Wallace B. Stone	30 Jun 1944
James H. Parks, Acting	31 Dec 1955
James H. Parks	8 Apr 1957
Roy E. Blankenship	29 Jul 1978
Riley M. Brown, Jr. Officer-In-Charge	25 Mar 1988
Marvin L. Baldwin	16 Jul 1988
Gary Wayne Stevens Officer-In-Charge	1 Dec 1998
Bryan I. Roberts Officer-In-Charge	9 Jan 1999
Gary W. Stevens Officer-In-Charge	11 Mar 1999
Mary D. Ault	27 Mar 1999
Helen H. Dennis Officer-In-Charge	19 Jan 2007
Patricia H. Hill	7 Jul 2007
Patricia H. Halterman (marriage)	5 Sep 2008
Paul D. Maness	29 Aug 2009



Manuscript  
29 Oct 188x



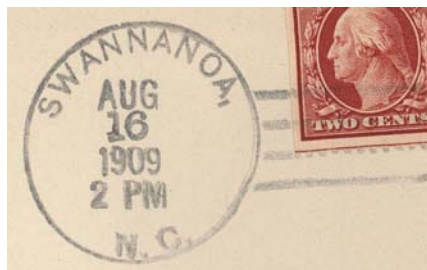
Type 1  
27.5 mm Black  
28 Apr 188x



Type 2  
27.5 mm Black  
22 Jul 1893  
27 Mar 1902



Type 3  
28.5 mm Black  
Doane Type 1-3  
23 Dec 1903  
21 Dec 1907

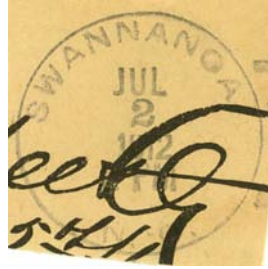


Type 4  
31 mm Black  
1906 Type A/1 4-Bar  
16 Aug 1909  
30 Aug 1911

# BUNCOMBE COUNTY

Swannano, Swannanoa (Cont.)

(Buncombe)



Type 5  
32 mm Black  
1910 Type B 4-Bar  
2 Jul 1912

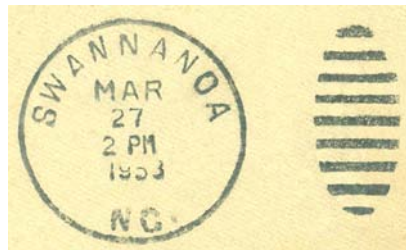


Type 6  
30 mm Black  
Metal Duplex Type H2  
28 Apr 1917



Type 7  
23.5 mm Black  
American Machine  
Type A14  
22 Aug 1933  
9 Jul 1935

Type 8  
23 mm Black  
International Machine  
Type AT/S 17  
1935



Type 9  
29 mm Black  
Metal Duplex Type H2  
19 May 1938  
19 Jun 1957

# BUNCOMBE COUNTY

Swannano, Swannanoa (Cont.)

(Buncombe)



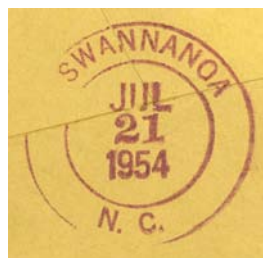
Type 10  
21 mm Black  
Universal Machine  
Type DT 600  
30 Aug 1939  
8 Feb 1943



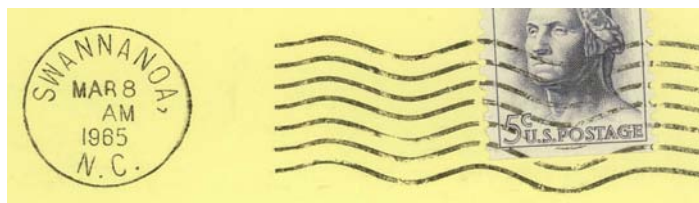
Type 11  
21 mm Black  
Universal Machine  
Type DT 300  
3 Jan 1944  
5 Aug 1958



Type 12  
35 mm Black  
17 Feb 1947



Type 13  
30 mm Magenta  
21 Jul 1954



Type 14  
21 mm Black  
International Machine  
Type J30  
9 Jan 1960  
28 Jul 1965



Type 15  
21 mm Black  
International Machine  
Type Hz30 (28778)  
14 Oct 1965  
1 Jul 1986

# BUNCOMBE COUNTY

Swannano, Swannanoa (Cont.)

(Buncombe)



Type 16  
30.5 mm Magenta  
18 Apr 1966

Type 17  
21 mm Black  
International Machine  
Type Nz30  
13 Jun 1967



Type 18  
32 mm Black  
Hanley hand-held roller  
2 Jul 1971



Type 19  
28 mm Magenta  
9 Mar 1981



Type 20  
20.5 mm Black  
Universal Machine  
Type DTSz 300 (28778)  
3 Mar 1993  
22 Dec 1994

# BUNCOMBE COUNTY

Swannano, Swannanoa (Cont.)

(Buncombe)



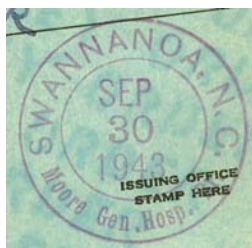
Type 21  
29.5 mm Red  
Self-Inking Postmarker (28778)  
25 Mar 1997



Type 22  
31.5 mm Red  
Self-Inking Postmarker  
(28778-9998)  
12 Mar 2007

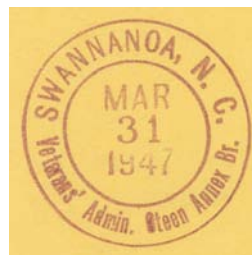
## Branch Station Cancels

Moore General Hospital Branch  
1 Nov 1942  
31 Mar 1944



Type 1  
30 mm Magenta  
30 Sep 1943

Veterans' Administration Steen Annex Branch  
Established 1 Feb 1947  
Name changed to Veterans' Administration Branch  
1 Apr 1947



Type 1  
30 mm Magenta  
31 Mar 1947  
11 Oct 1950



Type 2  
28 mm Magenta  
25 Jan 1950  
11 Oct 1950

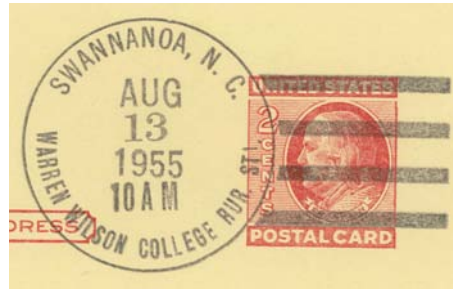
# BUNCOMBE COUNTY

## Swannano, Swannanoa (Cont.)

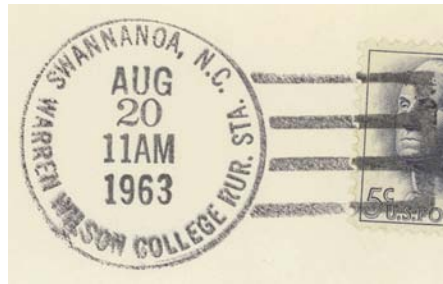
(Buncombe)

### Rural Station Cancels

Warren Wilson College Rural Station  
16 Jul 1955



Type 1  
33 mm Black  
13 Aug 1955  
4 Sep 1957



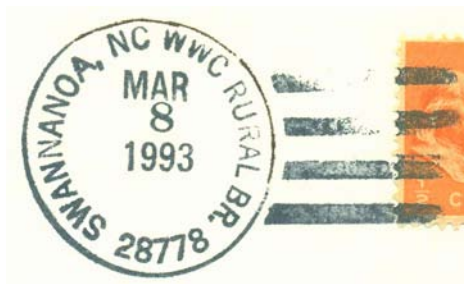
Type 2  
32.5 mm Black  
13 Sep 1962  
20 Aug 1963



Type 3  
29.5 mm Black  
10 Jul 1970  
25 Nov 1978



Type 4  
33.5 mm Black  
10 Jul 1970



Type 5  
33.5 mm Black  
25 Feb 1991  
8 Mar 1993

# BUNCOMBE COUNTY

## Swannano, Swannanoa (Cont.)

(Buncombe)

### Rural Station Cancels (Cont.)

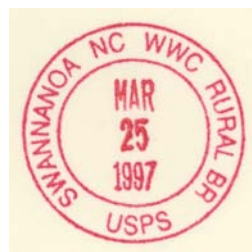
Warren Wilson College Rural Station (Cont.)



Type 6  
28 mm Red  
8 Mar 1993



Type 7  
34 mm Black  
Self-Inking Postmarker  
Type 3A (28778)  
25 Mar 1997

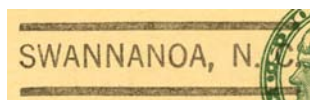


Type 8  
29 mm Red  
Self-Inking Postmarker  
(28778)  
25 Mar 1997

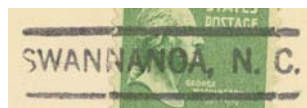
### Third Class Cancelers



Type 1  
34 x 17 mm Black  
1939



Type 2  
37 x 10 mm Black  
1 Feb 1947  
1 Apr 1947



Type 3  
36 x 9 mm Black  
25 Jan 1950

## BUNCOMBE COUNTY

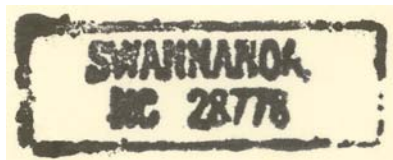
### Swannano, Swannanoa (Cont.)

(Buncombe)

#### Third Class Cancelers (Cont.)



Type 4  
34 x 12 mm Magenta  
11 Oct 1950



Type 5  
49 x 17 mm Black  
2 Jul 1971

### Taft

(Buncombe)

John W. Jones            19 Aug 1904  
Joseph N. Ballard      22 Jul 1908  
Discontinued            31 Mar 1914  
Mail to Brankton



Type 1  
29 mm Black  
Doane Type 2-?  
4 May 1905

### Theodore

(Buncombe)

Mollie V. Williams      1 May 1894  
Discontinued            30 Dec 1899  
Mail to Facerock



Type 1  
28 mm Black  
6 Mar 1895

### Tunnel

(Buncombe)

Ivy L. Pyatt              6 Apr 1906  
Order rescinded        2 Oct 1906  
W. L. Hamilton (declined) 28 Jun 1906  
Order rescinded        2 Oct 1906

## BUNCOMBE COUNTY

### Turkey Creek

(Buncombe)

Benoni Sams	31 Jan 1828
Rezin Davis	7 Apr 1829
John Reynolds	13 Oct 1829
James Sharp	4 Feb 1847
John F. Palmer	6 Dec 1850
Leicester Chapman	1 Mar 1852
George W. Palmer	30 Oct 1856
Robert F. McKee	9 Dec 1857
Henry W. Williams	27 Jan 1859
Name, changed to <b>Leicester</b>	10 Jun 1859

Turkey Creek  
May 1 - 1840

Manuscript  
25 May 1839  
1 May 1840

### Turnpike

(Buncombe)

Permenter D. Morgan	4 Nov 1857
P. D. Morgan, CSA	6 Jul 1861
CSA office closed on or before	30 Apr 1865
John C. Smathers	23 Nov 1866
Jasper L. Smathers	16 Jul 1873
Louisa A. Smathers	11 Feb 1878
George H. Smathers	8 May 1878
William O. Muller	17 Jul 1878
John A. Smathers	26 Sep 1879
John C. Smathers	9 Oct 1879
Discontinued	30 Apr 1908
Mail to Acton	

Turnpike NC  
4/24/82

Manuscript  
24 Apr 1882

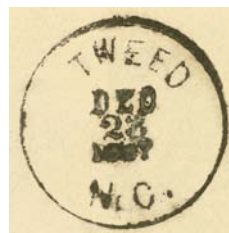


Type 1  
29 mm Black  
25 Sep 1902

### Tweed

(Buncombe)

David F. Whitaker	23 Aug 1883
Colombus L. Jenkins	9 Feb 1886
Joseph E. Young	15 Aug 1888
James J. Garren	20 Aug 1892
John B. Young	23 Dec 1893
John F. Smith	11 May 1896
James Garren	8 Dec 1896
Adolphus S. Dotson	2 Feb 1899
Discontinued	28 Feb 1903
Mail to Fletcher, Henderson County	



Type 1  
27 mm Black  
23 Dec 1897

## BUNCOMBE COUNTY

### Vanceville

(Buncombe)

Samuel B. Hemphill	26 Feb 1875
Elizabeth Hemphill	29 Jan 1886
Discontinued	15 Aug 1900
Mail to Beech	

Vanceville

Manuscript  
27 Jan 1882

### Vernon

(Buncombe)

George W. Davis	3 Sep 1884
James B. Ingle	21 May 1887
G. W. Ballard	26 May 1890
Alfred L. Bright	14 Jun 1890
Elbert J. Rhoads	11 Dec 1890
Name changed to <b>Inanda</b>	11 Mar 1891



Type 1  
27.5 mm Black  
20 Feb 188x

### Volga

(Buncombe)

Samuel M. Riddle	12 Feb 1902
Samuel M. Riddle	17 Apr 1902
Martha M. Riddle	24 Feb 1904
Jacob F. Nanney	16 Dec 1904
Joice E. Pike	27 Aug 1906
Robert R. Riddle	23 Nov 1911
Discontinued	15 Jul 1913
Mail to Alexander	



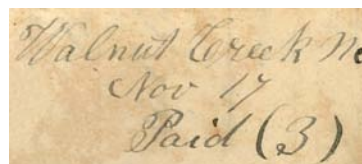
Type 1  
28 mm Black  
26 Sep 1904

*Note: The original entry for Samuel M. Riddle, 3 Feb 1902, was in Madison County. It is probable that this was an error which was corrected two months later.*

### Walnut Creek

(Buncombe)

Luke L. Branson	5 Nov 1849
L. L. Branson, CSA	31 Jul 1861
CSA office closed on or before	30 Apr 1865
Discontinued	7 Jan 1867
W. W. Gibbs	14 Feb 1870
Discontinued	30 Aug 1872



Manuscript  
17 Nov 1852

## BUNCOMBE COUNTY

### Warm Springs

(Buncombe)

William C. Neilson, Jr.	24 Apr 1801
Edward B. Smith (resigned)	6 Mar 1804
Thomas Keanked	6 Mar 1804
William Neilson, Jr.	by 1811
William Neilson	8 Feb 1817
James R. Garrett	18 May 1832
John E. Patton	5 May 1834
to Madison County	27 Jan 1851

Warm Springs N.C.  
June 30. 1837

Manuscript  
19 Jan 1828  
7 Nov 1849

Free J. E. Patton  
P. M.

Postmaster frank  
17 Apr 1841



Type 1  
28.5 mm Red  
11 Jul 1838

### Weaverville

(Buncombe)

Eliza J. McClure	12 Dec 1873
Charles A. Nichols	25 Jan 1876
Robert S. Abernathy	24 Dec 1877
Jehu W. Vandiver	5 Apr 1878
Dora Neilson	15 Dec 1885
Jehu W. Vandiver	28 Jan 1886
Samuel A. Penland	15 Jul 1889
James H. McDowell	9 Jul 1891
William E. Weaver	11 May 1896
Thomas H. Weaver	14 Jun 1900
Kate Reagan	4 May 1914
Lindsay H. Michael	20 Jan 1922
David E. Penland, Acting	10 Feb 1926
David E. Penland	28 Feb 1927
Robert E. Carmichael	10 Mar 1932
Kate Reagan	20 Apr 1936
Howell W. Ratcliff, Acting	30 Sep 1953
Stanley L. West, Acting	2 Apr 1961
Stanley L. West	21 Sep 1961
Robert Browning Officer-In-Charge	13 Mar 1970
Richard A. Browning	30 Oct 1971
Ted F. Fogel Officer-In-Charge	
Carl P. Riddle	7 Jun 1986
Dorothy E. Hawkins Officer-In-Charge	29 Jan 1992
Marvin R. Hinson	16 May 1992
Thomas R. Huntley Officer-In-Charge	29 Aug 2002
Thomas R. Huntley	30 Nov 2002



Type 1  
26 mm Black  
10 Mar 187x



Used with Types 1-3  
as separate killer



Type 2  
26 mm Black  
8 Jun 1883



Type 3  
27 mm Black  
29 Jan 1884

# BUNCOMBE COUNTY

## Weaverville (Cont.)

(Buncombe)

Bart L. Deyton Officer-In-Charge 29 Sep 2007  
Michael P. Goforth 13 Oct 2007  
Victor M. Cruz 6 Oct 2012



Type 4  
27.5 mm Black  
24 Mar 1890  
30 Mar 1896



Type 5  
28.5 mm Black  
17 Aug 1896  
21 Sep 1903



Type 6  
30 mm Black  
Metal Duplex Type H2  
16 May 1906  
30 Sep 1920



Type 7  
31 mm Black  
1906 Type A/1 4-Bar  
6 Apr 1908  
16 Sep 1909

Type 8  
23 mm Black  
Columbia Machine  
Type G 1W  
9 Feb 1931  
10 Apr 1931

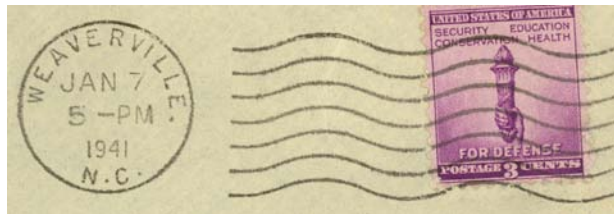
# BUNCOMBE COUNTY

Weaverville (Cont.)

(Buncombe)



Type 9  
26.5 mm Black  
Metal Duplex Type E2  
19 May 1938  
1 Nov 1955



Type 10  
22 mm Black  
International Machine  
Type AT/S 2721  
7 Jan 1941  
1 Jul 1948



Type 11  
20.5 mm Black  
Universal Machine  
Type DT 600  
3 Apr 1951  
20 Feb 1963



Type 12  
21 mm Black  
Universal Machine  
Type DT 300  
1 Jun 1963  
4 Aug 1965



Type 13  
20 mm Black  
Universal Machine  
Type DTSz 300 (28787)  
28 Jan 1966  
6 Jul 1993



Type 14  
27.5 mm Magenta  
22 Jan 1981

## BUNCOMBE COUNTY

### Weaverville (Cont.)

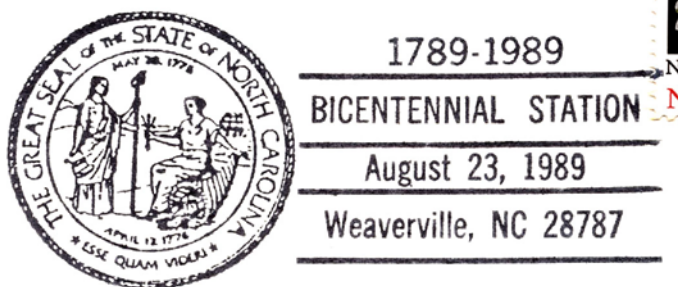
(Buncombe)



Type 15  
31 mm Black  
Self-Inking Postmarker  
Type 2B (28757)  
24 Oct 1991

### Temporary Station Cancels

Bicentennial Station



Type 1  
86 x 36.5 mm Black  
(28787)  
23 Aug 1989

### West Asheville, name changed from Hazel

(Buncombe)

Dorcas Reynolds	17 Jul 1889
Joseph W. Clapp	23 Nov 1889
William M. Jarrett	14 Jun 1892
Nathanael H. Holcombe	17 Nov 1892
J. R. Reynolds	25 May 1893
Samuel D. Hall	14 Oct 1893
John S. Boggs	12 Jan 1895
Discontinued	31 Jan 1898
Henry L. Herren	2 Aug 1898
Discontinued	31 Jan 1901
Mail to Asheville	



Type 1  
27 mm Black  
18 Oct 1897  
4 Dec 1891

Became station of Asheville

### Whittedville

(Buncombe)

Hiram Whitted	11 Apr 1825
Discontinued	29 Jun 1829